

REACTOR[®]

312066ZAF

EN

Electric, heated, plural component proportioner. For spraying polyurethane foam and polyurea coatings. For professional use only.

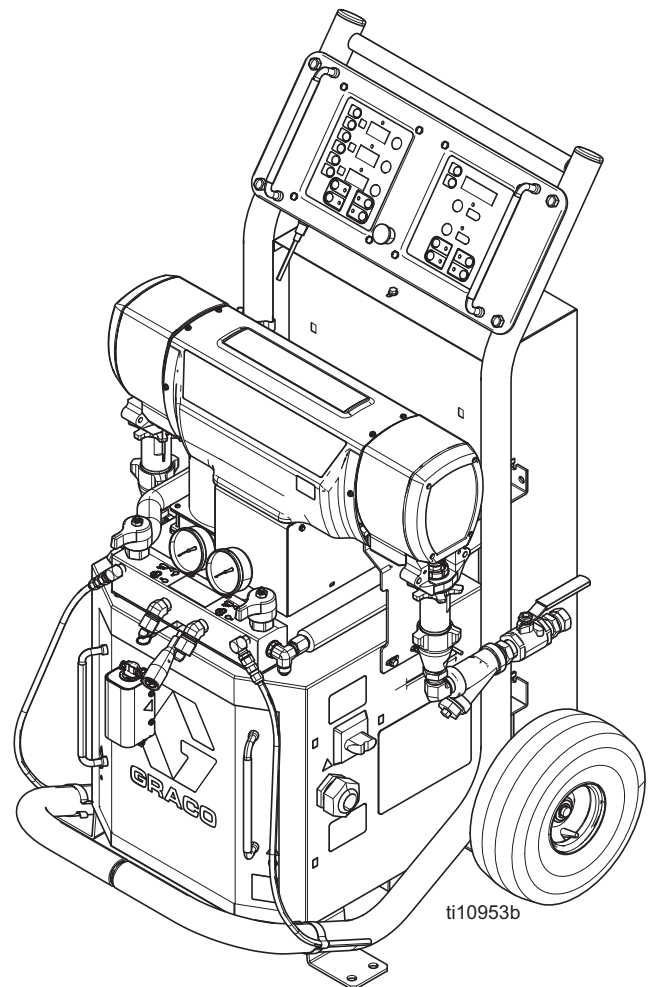
Not approved for use in European explosive atmosphere locations.



Important Safety Instructions

Read all warnings and instructions in this manual. Save these instructions.

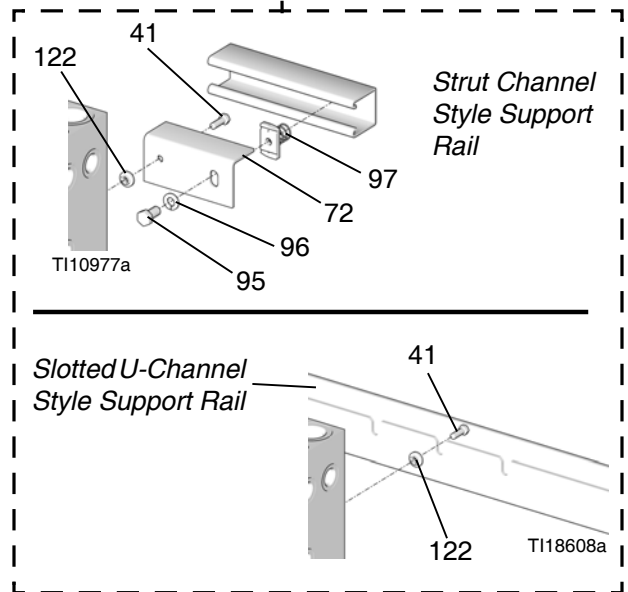
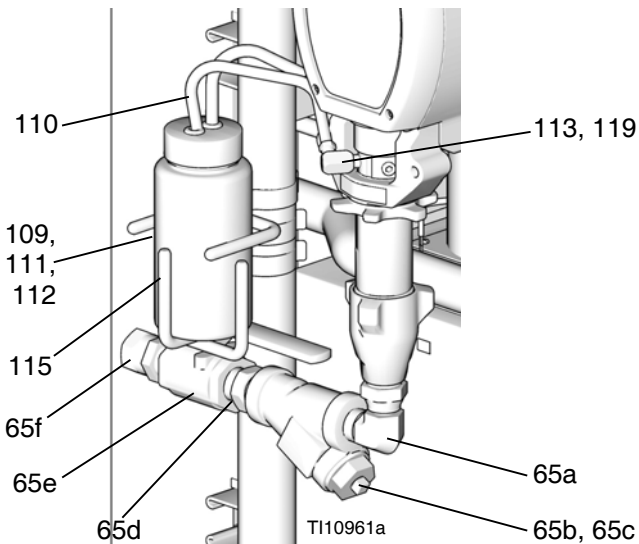
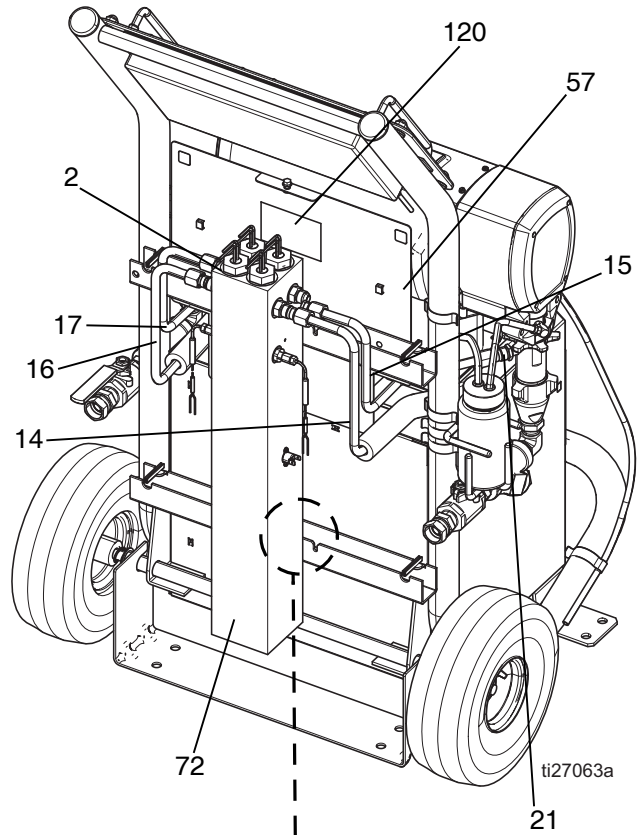
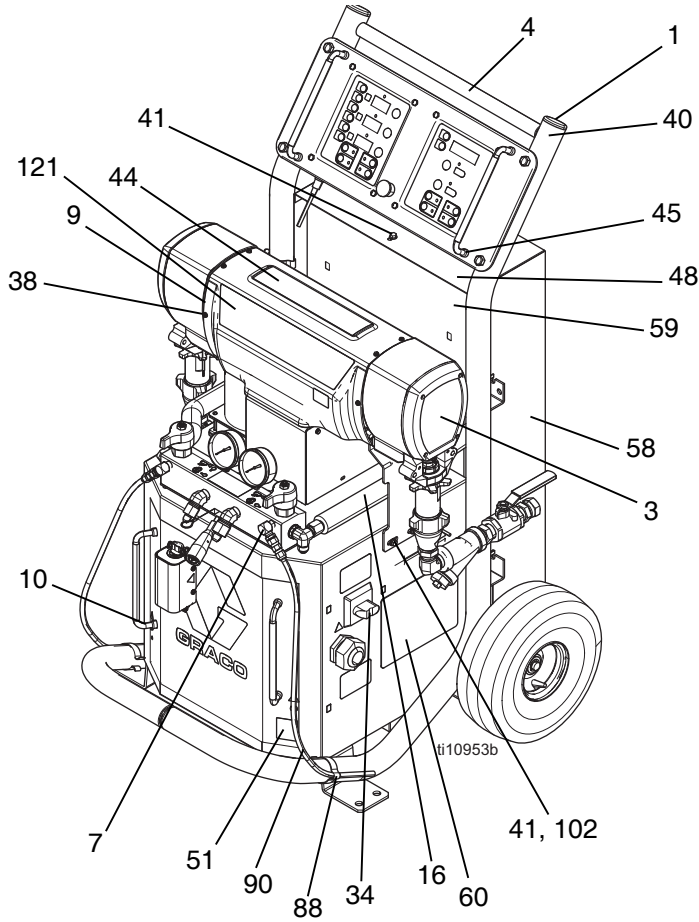
See pages 3 and 4 for model information, including maximum working pressure and approvals.



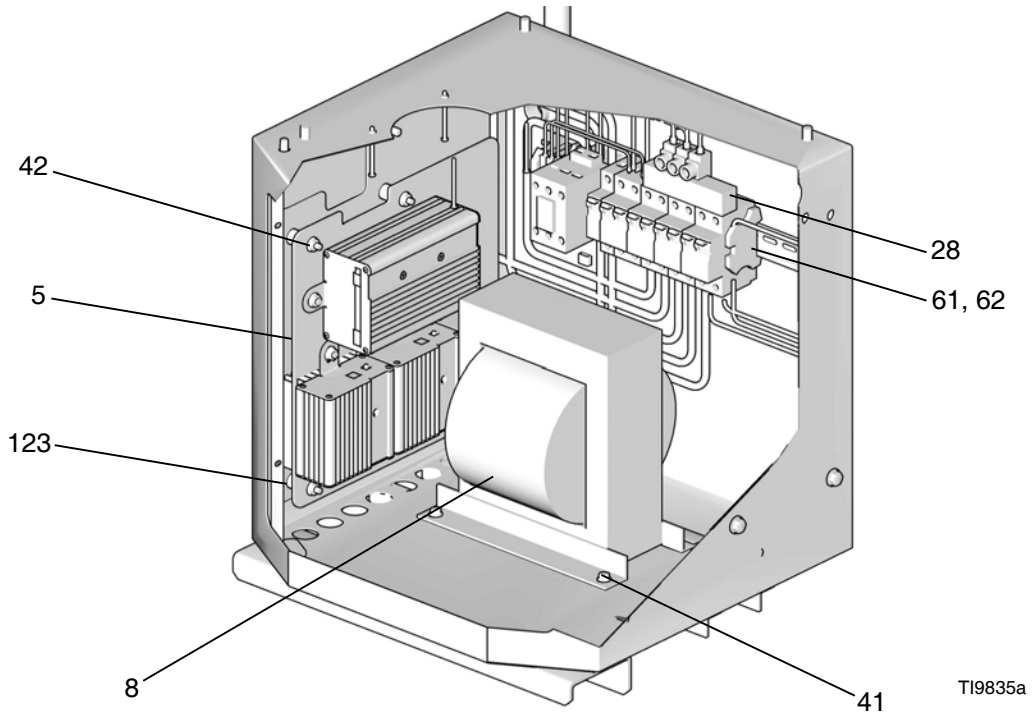
Model E-XP1 Shown

Parts

Reactor Assembly (Model E-XP1 Shown)

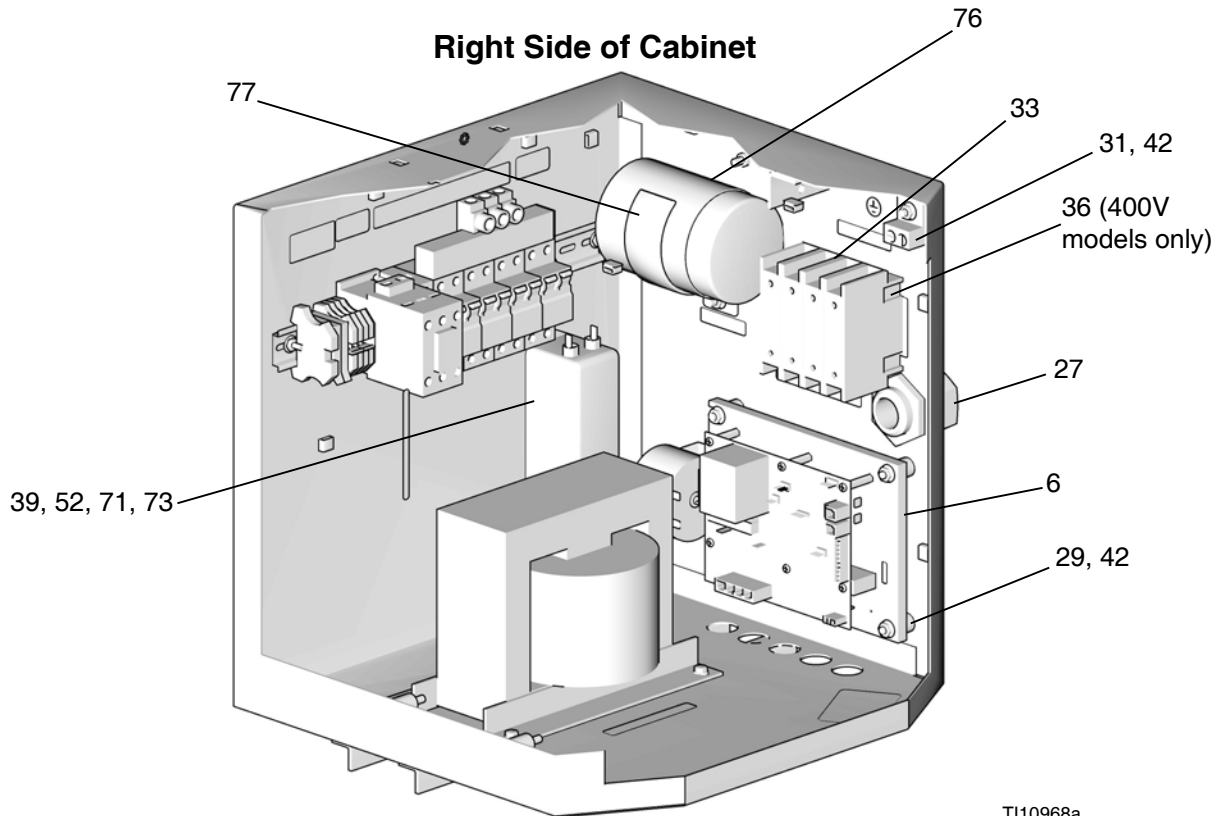


Left Side of Cabinet



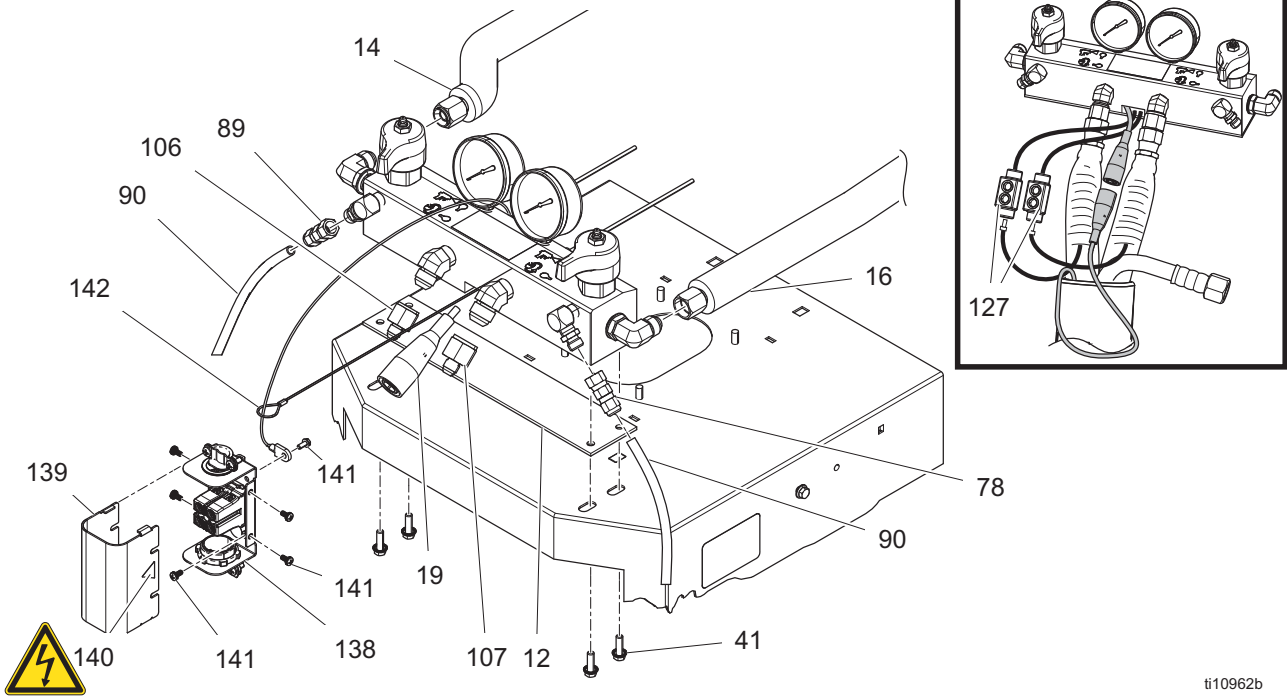
TI9835a

Right Side of Cabinet



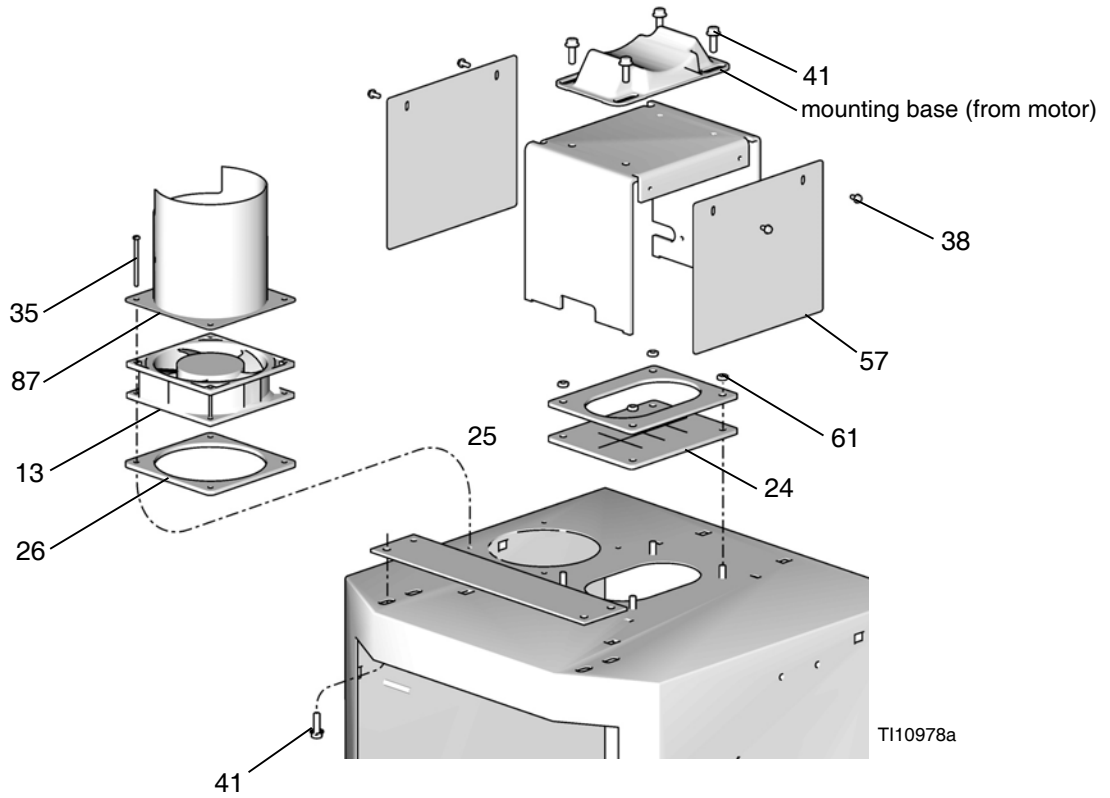
TI10968a

Detail, Fluid Manifold Area



ti10962b

Detail, Cabinet Area



Parts Used on All Models

See pages 56 through 58 for parts that vary by model.

Ref.	Part	Description	Qty.	Ref.	Part	Description	Qty.
1	----	FRAME; page 64	1	65f	118459	FITTING, union, swivel; 3/4-14 npt(m) x 3/4-14 npt(f)	2
2	----	HEATER; pages 62 and 63	*	66	101078	Y-STRAINER; includes 66a	2
3	----	MODULE, proportioner; page 59	*	66a†	26A349	KIT, filter, replacement (2 pack)	1
4	245974	DISPLAY; page 65	1		26A350	KIT, filter, replacement (10 pack)	1
5	----	CONTROL, temperature; page 66	1	67	109077	VALVE, ball; 3/4 npt (fbe)	2
6	----	CONTROL, motor; page 67	*	68	C20487	NIPPLE; 3/4 npt	2
7	247823	MANIFOLD, fluid; page 68	1	69	157785	UNION, swivel; 3/4 npt(m) x 3/4 npsm(f)	2
8	----	TRANSFORMER; pages 56-58	*	71	----	SCREW, machine; pages 56-58	*
9	----	SHIELD; page pages 56-58	*	72◆	----	BRACKET, heater; pages 56-58	*
10	246976	DOOR, cabinet	1	73	----	WASHER, lock; pages 56-58	*
11†	261669	SENSOR, fluid temperature	1	76	----	CAPACITOR; pages 56-58	*
12	15B456	GASKET, manifold	1	77	----	BRACKET; pages 56-58	*
13	19Y415	FAN, assembly	1	86	----	CABLE, overtemperature, jumper; pages 56-58	*
14	----	TUBE, heater component A; pages 56-58	*	87	15B807	SHIELD, fan	1
15	----	TUBE, pump, component A; pages 56-58	*	88	186494	CLIP, spring	6
16	----	TUBE, heater component B; pages 56-58	*	89	205447	COUPLING, hose	2
17	----	TUBE, pump, component B; pages 56-58	*	90	15M338	TUBE, low pressure; 1/4 in. (6 mm) ID; 3/8 in. (16 mm) OD; 4 ft (1.2 m); PTFE	1
18†	247787	CABLE, overtemperature; see electrical diagrams	1	95◆	----	BOLT; hex hd; pages 56-58	*
19†	15B380	CABLE, hose control; see electrical diagrams	1	96◆	----	LOCKWASHER; 3/8; pages 56-58	*
20	15B383	CABLE, display	1	97◆	----	NUT, channel; pages 56-58	*
21	----	CONNECTOR, tube; pages 56-58	*	102	----	STRAP, motor; pages 56-58	*
22	116773	CONNECTOR, plug	1	106	117502	REDUCER; #5 x #8 JIC	1
23	C38163	WASHER, lock, external tooth	1	107	117677	REDUCER; #6 x #10 JIC	1
24	15B361	BOOT, wire feed through	1	109	246928	RESERVOIR; includes 110-119; see 309911	1
25	15B510	PLATE, cover, wire	1	110	054826	TUBE; PTFE; 1/4 in. (6 mm) ID; 2 ft (0.6 m)	2
26	15B360	GASKET, fan	1	111	118433	VALVE, check	1
27	255047	STRAIN RELIEF	1	112	118432	VALVE, check	1
28	----	MODULE, breaker; pages 56-58	*	113	116746	FITTING, barbed	2
29	116149	SPACER	8	115	15C568	BRACKET, reservoir	1
31	117666	TERMINAL, ground	1	117	206995	THROAT SEAL LIQUID; 1 qt (1 liter)	1
33★	123969	SWITCH, disconnect	1	119	191892	ELBOW; 1/8 npt (m x f)	2
34★	123967	SWITCH, main power	1	120▲	171001	LABEL, warning	1
35	117723	SCREW, machine; 6-32 x 2 in. (51 mm)	4	121	----	LABEL; pages 56-58	*
36	----	SWITCH, added pole; 380V; page 56	*	122	----	INSULATOR, heat; pages 56-58	*
38	115492	SCREW, machine; 8-32 x 0.345 in. (9 mm)	13	123	247782	SPACER	4
39	----	FILTER; 230V; page 56	*	124	247854	COVER, connector, module	1
40	117623	NUT, cap; 3/8-16	4	125	114331	SCREW, machine; 6-32 x 0.375 in. (9.5 mm)	2
41	113796	SCREW, flanged, hex hd; 1/4-20 x 3/4 in. (19 mm)	15	127✓	261821	CONNECTOR, wire	1
42	115942	NUT, hex flange; 1/4-20	15	138✿	24W204	ENCLOSURE, TB	1
44	15K817	LABEL, diagnostic codes	1	139✿	25A234	ENCLOSURE, cover	1
45	189930	LABEL, caution	3	140✿▲	189930	LABEL, caution	1
48▲	189285	LABEL, caution	3	141✿	16X129	SCREW	8
51▲	----	LABEL, warning; pages 56-58	*	142✿	17C082	CABLE, lanyard	1
52	----	CABLE, harness, filter; pages 56-58	*				
53	15B593	SHIELD, membrane switch; pack of 10	1				
57	15B775	COVER, wire access	2				
58	247524	COVER, heater, back	1				
59	256732	COVER, heater, front	1				
60▲	15G280	LABEL, warning	1				
61	113505	NUT, hex, keps; 10-24	6				
62	112776	WASHER, plain; no. 10	2				
65	----	KIT, fluid inlet	1				
65a	----	FITTING, swivel, elbow	2				
65b	101078	Y-STRAINER	2				
65c†	26A349	KIT, filter, replacement (2 pack)	1				
	26A350	KIT, filter, replacement (10 pack)	1				
65d	C20487	NIPPLE, 3/4 npt	2				
65e	109077	VALVE, ball; 3/4 npt (fbe)	2				

▲ Replacement Danger and Warning labels, tags, and cards are available at no cost.

* See quantity on referenced pages.

† Not shown.

★ Required for all A-F series models. Included in Knob Repair Kit 258920 (purchase separately).

◆ Not required for slotted U-Channel style heater support rails.

✓ For models series A - E.

✿ For models series F.

Parts that Vary by Model

Use the following tables on this and the next two pages to find parts that vary by model. Find the reference number and of part in left column and Reactor model in top row. Intersection is correct part number.

See page 55 for parts common to all models.

Ref.	Description	Reactor Models												Qty.
		259024 E-XP1	259025 E-20	259026 E-30	259028 E-XP2	259029 E-XP1	259030 E-20	259031 E-30	259032 E-XP2	259033 E-XP1	259034 E-20	259035 E-30	259036 E-XP2	
2	HEATER; pages 62 and 63	247507	247506	247507	247509 (qty: 2)	247507	247506	247507	247509 (qty: 2)	247507	247506	247507	247509 (qty: 2)	1
3	MODULE, proportioner; page 59	245956	245956	245957	245959	245956	245956	245957	245959	245956	245956	245957	245959	1
6	CONTROL, motor; page 67	24G879	24G879	24G881	24G881	24G879	24G879	24G881	24G881	24G879	24G879	24G881	24G881	1
8	TRANSFORM ER;	247840	247840	247812	247812	247840	247840	247812	247812	247840	247840	247812	247812	1
9	SHIELD	276878	276878	276879	276879	276878	276878	276879	276879	276878	276878	276879	276879	1
14	TUBE, heater, component A	247920	247920	247920	247915	247920	247920	247920	247915	247920	247920	247920	247915	1
15	TUBE, pump, component A	247912	247912	247919	247914	247912	247912	247919	247914	247912	247912	247919	247914	1
16	TUBE, heater, component B	247918	247918	247918	247917	247918	247918	247918	247917	247918	247918	247918	247917	1
17	TUBE, pump, component B	247913	247913	247921	247916	247913	247913	247921	247916	247913	247913	247921	247916	1
21	CONNECTOR , tube	121310	121310	121311	121311	121310	121310	121311	121311	121310	121310	121311	121311	2
28	MODULE, breaker; page 69	C	C	F	F	B	B	E	E	A	A	D	D	1
36	SWITCH, added pole; 380V					123968	123968	123968	123968					1
39	FILTER; 230V			117667	117667			117667	117667			117667	117667	1

Ref.	Description	Reactor Models												Qty.
		259024 E-XP1	259025 E-20	259026 E-30	259028 E-XP2	259029 E-XP1	259030 E-20	259031 E-30	259032 E-XP2	259033 E-XP1	259034 E-20	259035 E-30	259036 E-XP2	
51 ▲	LABEL, warning			198278	198278			198278	198278			198278	198278	1
52	CABLE, harness, filter			15B385	15B385			15B385	15B385			15B385	15B385	1
65	KIT, fluid inlet	234366	234366	234367	234366	234366	234366	234367	234366	234366	234366	234367	234366	1
65a	ELBOW, swivel; 3/4 npt(m) x 1" npt(f)	160327	160327	118463	160327	160327	160327	118463	160327	160327	160327	118463	160327	2
71	SCREW, machine			---	---			---	---			---	---	2
72◆	BRACKET, heater	247523	247523	247523		247523	247523	247523		247523	247523	247523		2
	BRACKET, heater				247523				247523				247523	4
73	WASHER, lock			103181	103181			103181	103181			103181	103181	2
76	CAPACITOR			244733	244733			244733	244733			244733	244733	1
77	BRACKET			197999	197999			197999	197999			197999	197999	1
86	CABLE, overtemperatu re, jumper	15H187	15H187	15H187		15H187	15H187	15H187		15H187	15H187	15H187		1
95◆	BOLT; hex hd; 3/8-16	100469	100469	100469		100469	100469	100469		100469	100469	100469		2
	BOLT; hex hd; 3/8-16				100469				100469				100469	4
96◆	LOCKWASHE R; 3/8	100133	100133	100133		100133	100133	100133		100133	100133	100133		2
	LOCKWASHE R; 3/8				100133				100133				100133	4
97◆	NUT, channel	118446	118446	118446		118446	118446	118446		118446	118446	118446		2
	NUT, channel				118446				118446				118446	4
102	STRAP, motor	15B107	15B107	15B108	15B108	15B107	15B107	15B108	15B108	15B107	15B107	15B108	15B108	1
121	LABEL	15M504	15M500	15M499	15M501	15M504	15M500	15M499	15M501	15M504	15M500	15M499	15M501	1
122	INSULATOR	167002	167002	167002	167002 (qty: 4)	167002	167002	167002	167002 (qty: 4)	167002	167002	167002	167002 (qty: 4)	2

Parts that Vary by Model (continued)

Ref.	Description	Reactor Models			Qty.
		259057 E-30 (15.3 kW)	259058 E-30 (15.3 kW)	259059 E-30 (15.3 kW)	
2	HEATER; pages 62 and 63	247509	247509	247509	2
3	MODULE, proportioner; page 59	245957	245957	245957	1
6	CONTROL, motor; page 67	24G881	24G881	24G881	1
8	TRANSFORMER;	247812	247812	247812	1
9	SHIELD	276879	276879	276879	1
14	TUBE, heater, component A	247915	247915	247915	1
15	TUBE, pump, component A	247914	247914	247914	1
16	TUBE, heater, component B	247917	247917	247917	1
17	TUBE, pump, component B	247916	247916	247916	1
21	CONNECTOR, tube	121311	121311	121311	2
28	MODULE, breaker; page 69	F	D	E	1
36	SWITCH, added pole; 380V			123968	1
39	FILTER; 230V	117667	117667	117667	1
51▲	LABEL, warning	198278	198278	198278	1
52	CABLE, harness, filter	15B385	15B385	15B385	1
65	KIT, fluid inlet	234367	234367	234367	1
65a	ELBOW, swivel; 3/4 npt(m) x 1" npt(f)	118463	118463	118463	2
71	SCREW, machine	---	---	---	2
72◆	BRACKET, heater	247523	247523	247523	4
73	WASHER, lock	103181	103181	103181	2
76	CAPACITOR	244733	244733	244733	1
77	BRACKET	197999	197999	197999	1
95◆	BOLT; hex hd; 3/8-16	100469	100469	100469	4
96◆	LOCKWASHER; 3/8				
	LOCKWASHER; 3/8	100133	100133	100133	4

Ref.	Description	Reactor Models			Qty.
		259057 E-30 (15.3 kW)	259058 E-30 (15.3 kW)	259059 E-30 (15.3 kW)	
97◆	NUT, channel				
	NUT, channel	118446	118446	118446	4
102	STRAP, motor	15B108	15B108	15B108	1
121	LABEL	15M499	15M499	15M499	1
122	Insulator	167002	167002	167002	4

▲ Replacement Danger and Warning labels, tags, and cards are available at no cost.

◆ Not required for slotted U-Channel style heater support rails.

--- Not for sale.

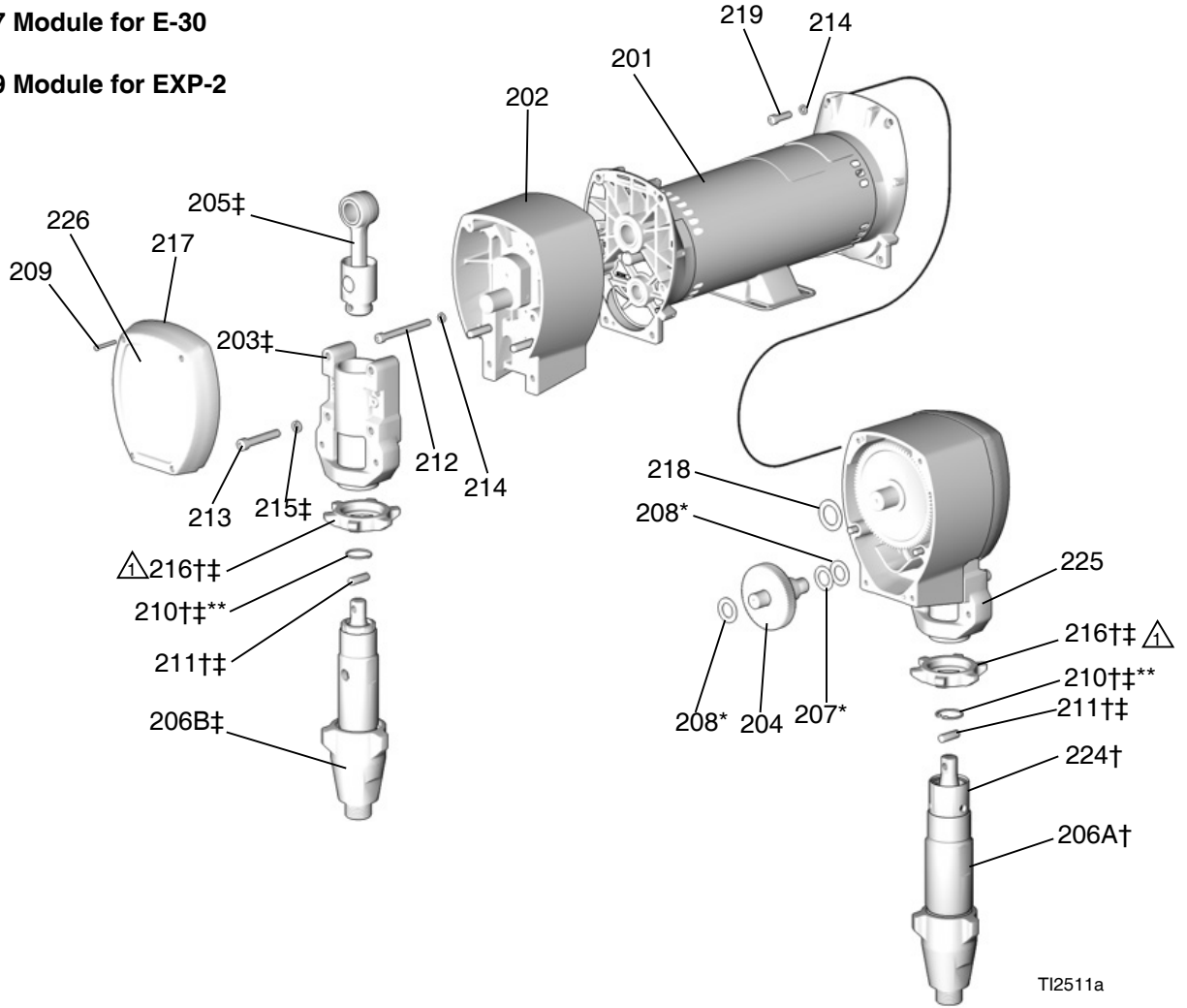
Sub Assemblies

Proportioner Module

245956 Module for E-20 and EXP-1

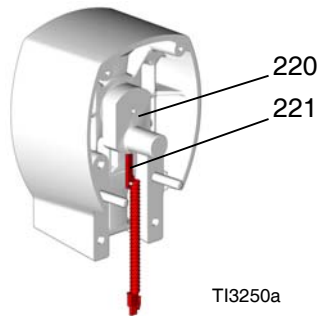
245957 Module for E-30

245959 Module for EXP-2



Flat side faces up.

Detail of Cycle Counter Switch



TI3250a

Proportioner Module Parts List

Ref.	Part	Description	Qty.		
			245956	245957	245959
201	24V618	MOTOR	1		
	24V500	MOTOR		1	1
202	245968	HOUSING, drive	2		
	245969	HOUSING, drive		2	2
203‡	240523	HOUSING, bearing	2		
	241015	HOUSING, bearing			2
	245927	HOUSING, bearing		2	
204	244264	GEAR; includes items 207, 208	2		
	244265	GEAR; includes items 207, 208		2	2
205‡	241008	ROD, connecting; includes item 210	2		
	241279	ROD, connecting; includes item 210		2	2
206A†	246830	PUMP, displacement, component A; see 309577	1		
	246831	PUMP, displacement, component A; see 309577			1
	246832	PUMP, displacement, component A; see 309577		1	
206B‡	245970	PUMP, displacement, component B; see 309577	1		
	245971	PUMP, displacement, component B; see 309577			1
	245972	PUMP, displacement, component B; see 309577		1	
207*	114699	WASHER, thrust; steel	2	2	2
208*	114672	WASHER, thrust; bronze	4	4	4
209	114418	SCREW, self-tapping; 8-32 x 1 in. (25 mm)	8		
	114818	SCREW, self-tapping; 8-32 x 1-1/4 in. (31 mm)		8	8
210†‡**	176817	CLIP, wire	2		
	183169	CLIP, wire		2	2
211†‡	176818	PIN	2		
	183210	PIN		2	2
212	107218	SCREW, cap, socket-hd; 1/4-20 x 2-3/4 in. (70 mm)	4		
	114686	SCREW, cap, socket-hd; 5/16-18 x 3-1/4 in. (83 mm)		4	4
213	107210	SCREW, cap, socket-hd; 3/8-16 x 1-1/2 in. (38 mm)	8		
	114666	SCREW, cap, socket-hd; 3/8-16 x 2-1/4 in. (57 mm)		8	8
214	105510	WASHER, lock; 1/4	12		
	104008	WASHER, lock; 5/16		12	12
215‡	106115	WASHER, lock; 3/8 size	8	8	8
216†‡	192723	NUT, retaining	2		
	193031	NUT, retaining			2
	193394	NUT, retaining		2	
217	179899	COVER	2		
	241308	COVER		2	2
218	116191	WASHER, thrust	2		
	116192	WASHER, thrust		2	2
219	100644	SCREW, cap, socket-hd; 1/4-20 x 3/4 in. (19 mm)	4		
	101864	SCREW, cap, socket-hd; 5/16-18 x 1 in. (25 mm)		4	4
220	116618	MAGNET	1	1	1
221	117770	SWITCH, cycle counter			1

Ref.	Part	Description	Qty.		
			245956	245957	245959
223	100643	SCREW, cap, socket-hd; 1/4-20 x 1 in. (25 mm)	4		
	102962	SCREW, cap, socket-hd; 5/16-18 x 1-1/4 in. (31 mm)		4	4
224†	104765	PLUG	2	2	2
225	15C587	GUARD, finger	1		
	15C588	GUARD, finger			1
226	15M507	LABEL	1		
	15M508	LABEL		1	1

* Parts included in Gear Kit 244264 (245956) or 244265 (245957, 245959).

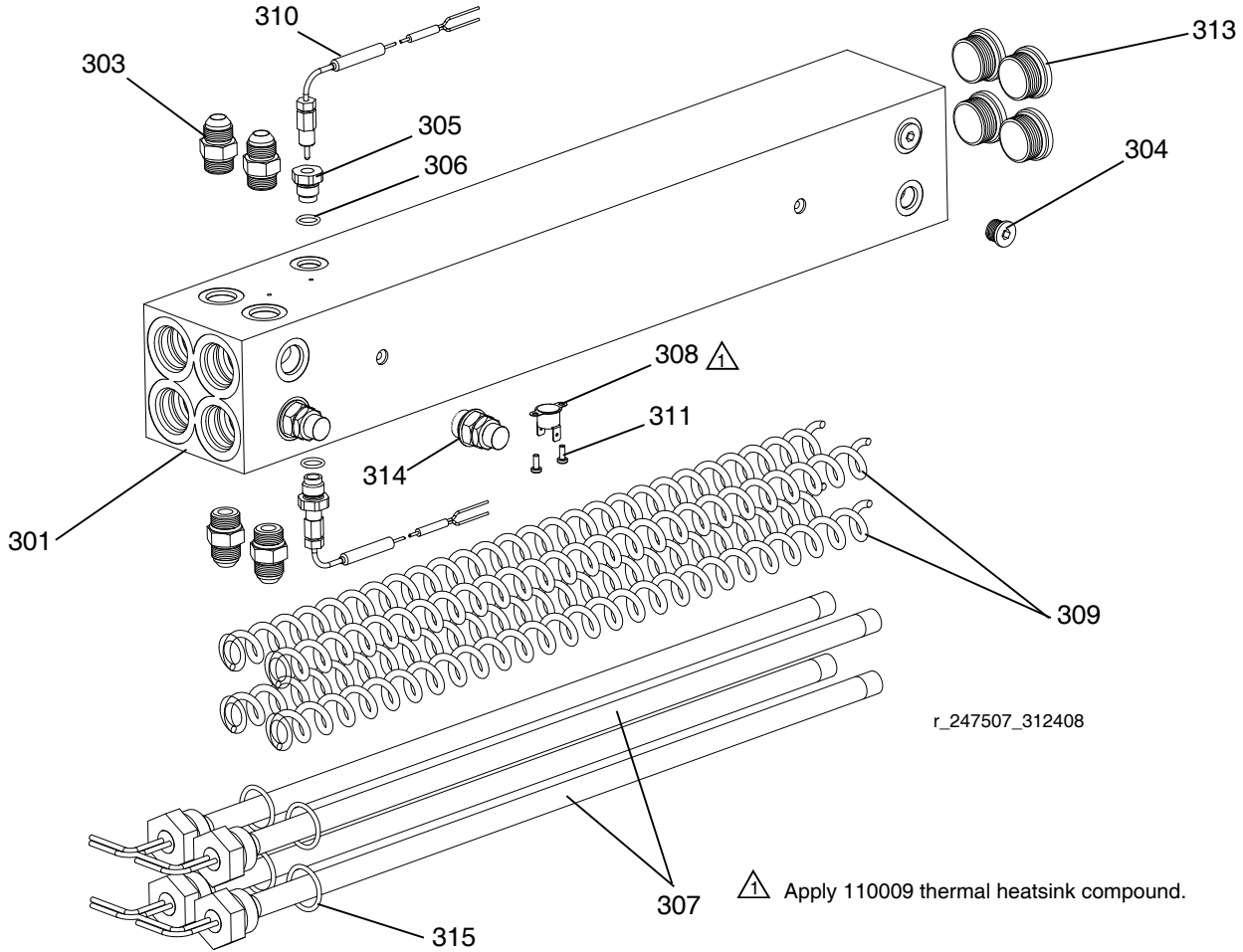
** Parts included in Connecting Rod Kit 241008 (245956) or 241279 (245957, 245959).

† Part included in E-20 and EXP-1 A Side Repair Kit 25E298.

‡ Part included in E-20 and EXP-1 B Side Repair Kit 25E299.

Fluid Heaters

247506, 6.0 kW Fluid Heaters
247507, 10.2 kW Fluid Heaters

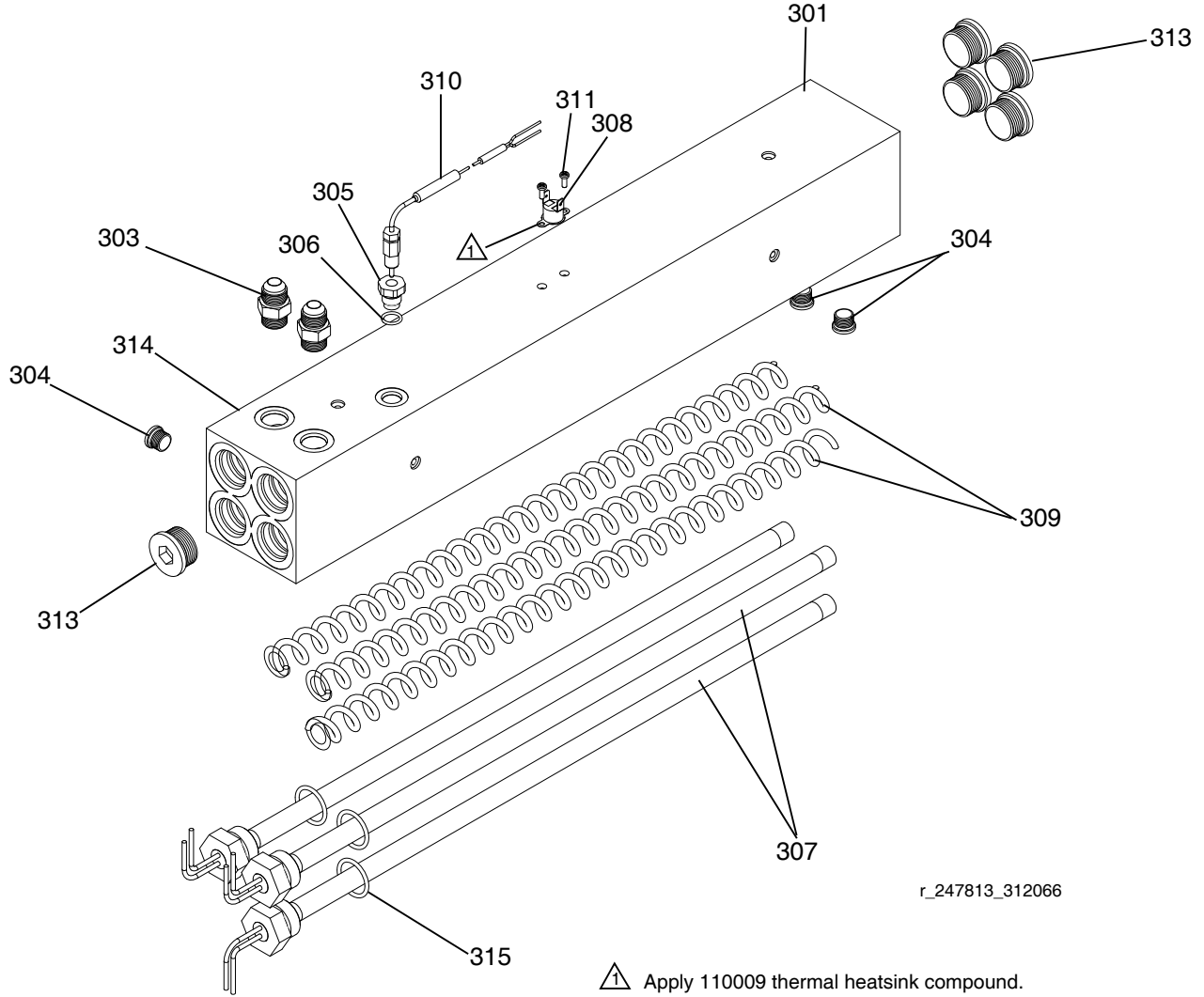


Ref	Part	Description	Qty.	Ref	Part	Description	Qty.
301	----	HOUSING, heater	1	310	117484	SENSOR	2
303	121309	ADAPTER	4	311	100518	SCREW, machine, pan hd	2
304	15H304	PLUG	2	313	15H305	PLUG, hollow	4
305	15H306	ADAPTER, thermocouple	2	314	247520	DISC, rupture	2
306	120336	O-RING; fluoroelastomer	2	315	124132	O-RINGS	4
307	----	HEATER, immersion	4				
	16A110	2550W; 10.2kW heater only					
	16A112	1500 W; 6.0 kW heater only					
308	15B137	SWITCH, overtemperature	1				
309	15B135	MIXER, immersion heater	4				

7.65 kW Single Zone Fluid Heater

(Two Per Machine)

Part 247509

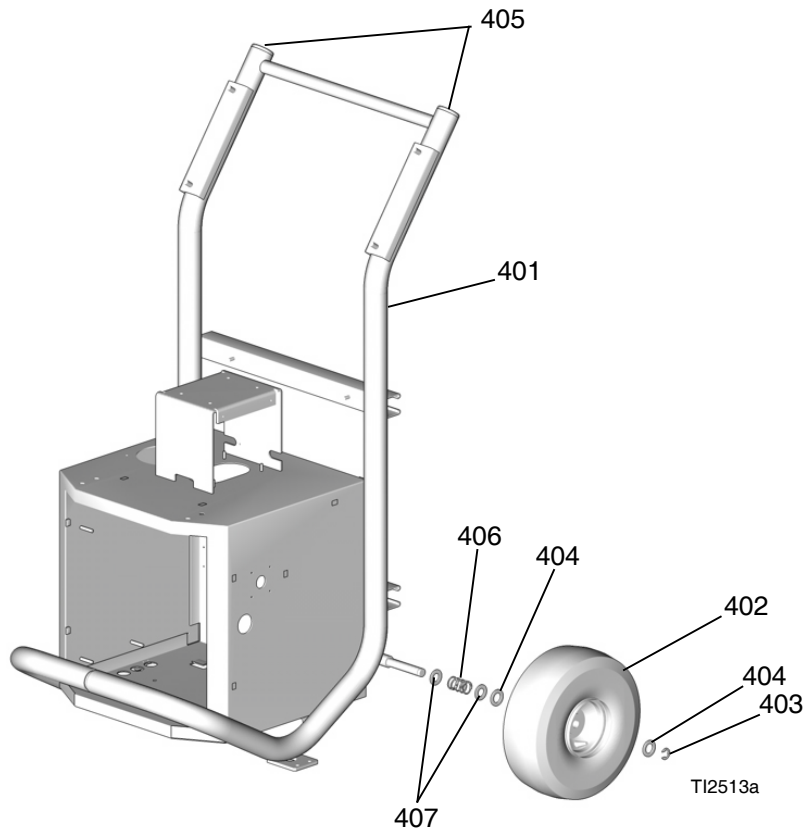


r_247813_312066

Apply 110009 thermal heatsink compound.

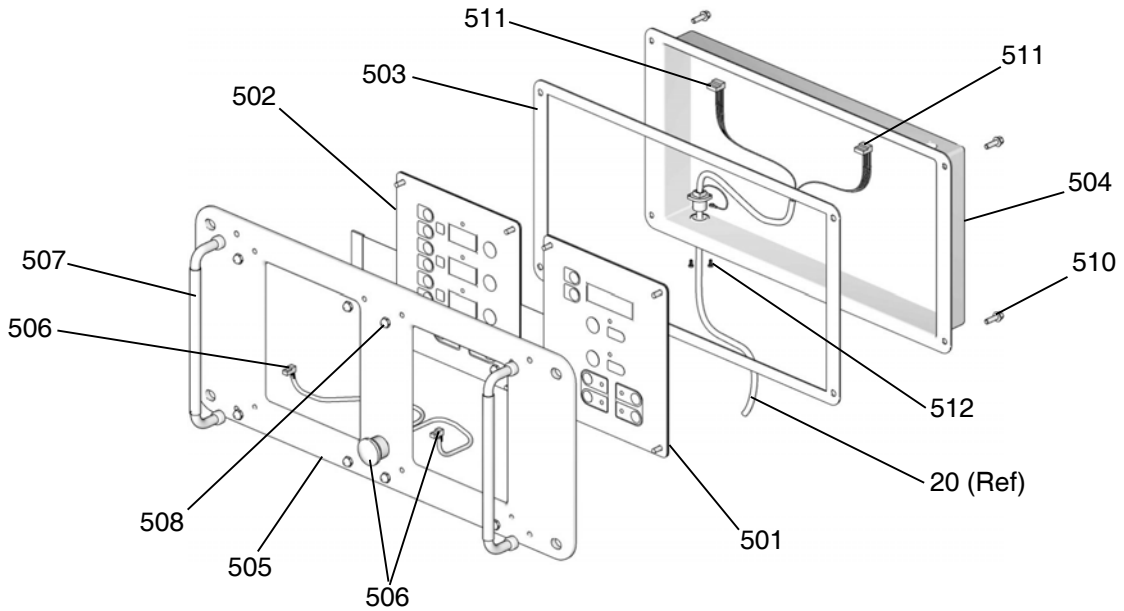
Ref.	Part	Description	Qty	Ref.	Part	Description	Qty
301	----	HOUSING, heater	1	310	117484	SENSOR	1
303	121309	ADAPTER	2	311	100518	SCREW, machine, pan hd	2
304	15H304	PLUG	3	313	15H305	PLUG, hollow	5
305	15H306	ADAPTER, thermocouple	1	314	247520	DISC, rupture; not shown	1
306	120336	O-RING; fluoroelastomer	1	315	124132	O-RING	3
307	16A110	HEATER, immersion; 2550 W	3				
308	15B137	SWITCH, overtemperature	1				
309	15B135	MIXER, immersion heater	3				

Reactor Frame

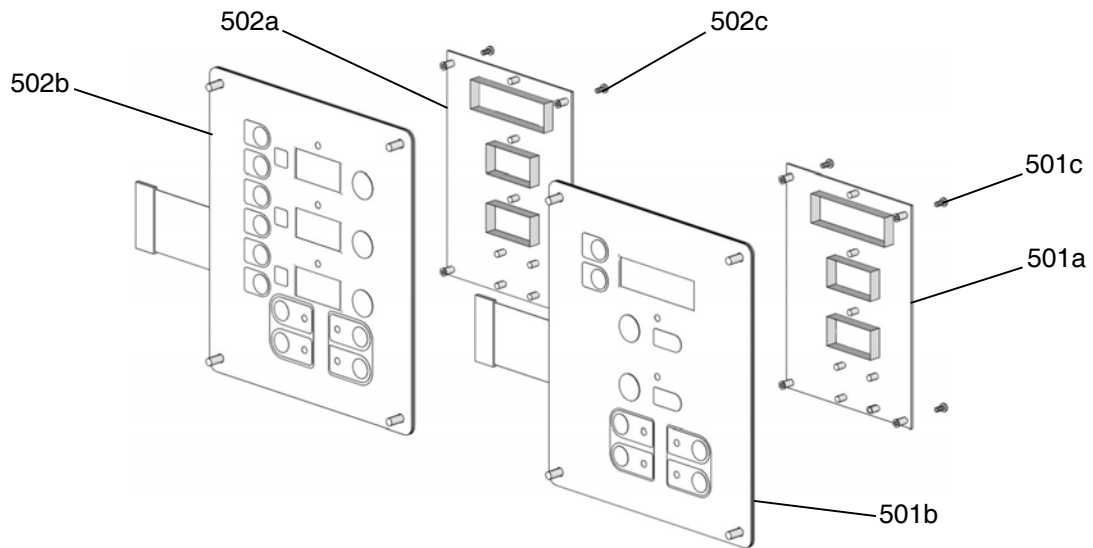


Ref.	Part	Description	Qty.
401	----	FRAME	1
402	116478	WHEEL	2
403	101242	RING, retaining	2
404	116477	WASHER, flat; nylon	4
405	112125	PLUG	2
406	116411	SPRING	2
407	154636	WASHER, flat	4

Display



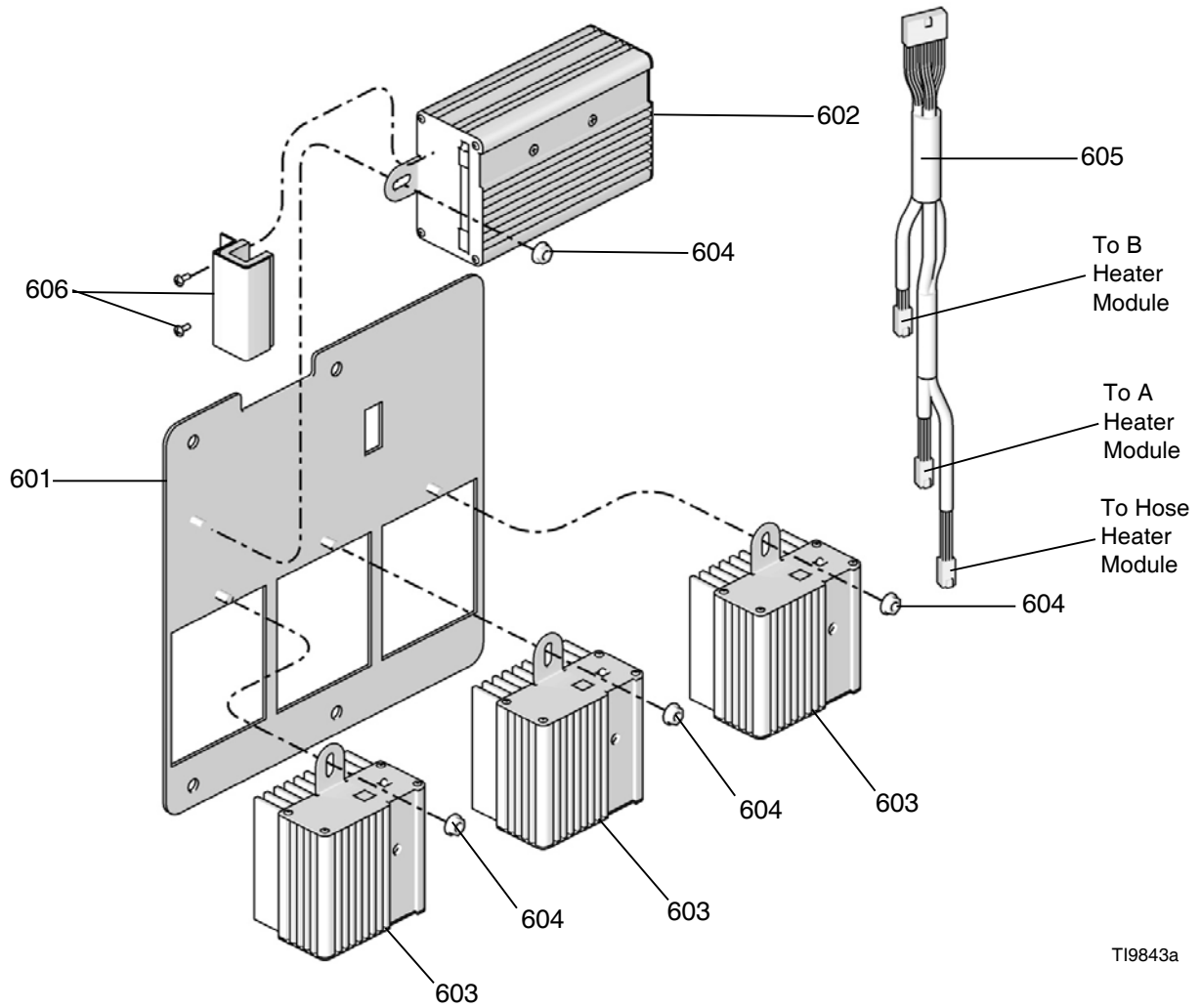
ti2574a



ti3172a

Ref.	Part	Description	Qty.	Ref.	Part	Description	Qty.
501	24G884	DISPLAY, pressure; includes 501a-501c	1	506	246287	HARNESSES, wire, red stop button	1
				507	117499	HANDLE	2
501a	24G882	.BOARD, circuit	1	508	117523	NUT, cap; 10-24	8
501b	246478	.SWITCH, membrane	1	510	---	SCREW, machine, pan-hd; M5 x 0.8; 16 mm	4
501c	112324	.SCREW	4	511	15B386	CABLE, display	1
502	24G883	DISPLAY, temperature; includes 502a-502c	1	512	195853	SCREW, machine; M2.5 x 6	2
502a	24G882	.BOARD, circuit	1	---			Not for sale.
502b	246479	.SWITCH, membrane	1				
502c	112324	.SCREW	4				
503	15B293	GASKET	1				
504	15B292	COVER	1				
505	15B291	PLATE	1				

Temperature Control

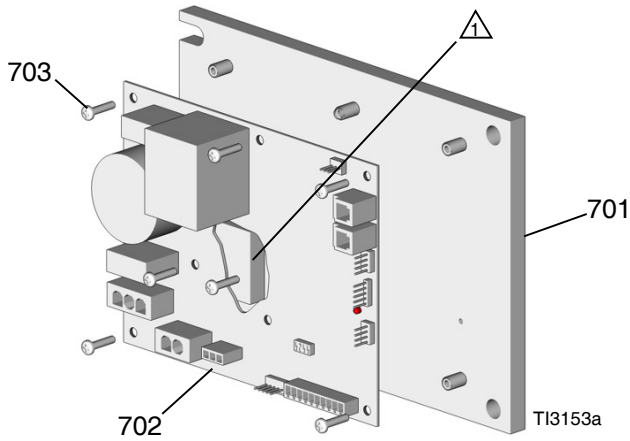


T19843a

Ref.	Part	Description	Qty.
601	247772	PANEL, module mounting	1
602	247827	HOUSING, control module	1
603	247828	HOUSING, heater module	3
604	115942	NUT, hex	4
605	247801	CABLE, communication	1
606	247825	KIT, cover, connector with screws	1

Motor Control

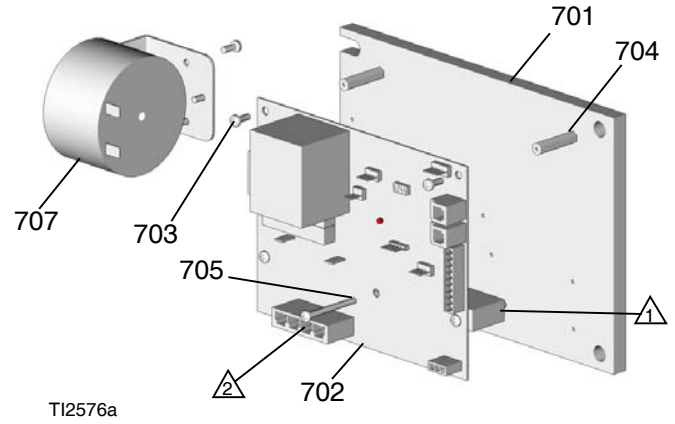
24G879 Motor Control for E-20 and EXP-1



Ref.	Part	Description	Qty.
701	15B297	HEAT SINK	1
702	24G878	BOARD, motor control	1
703	107156	SCREW, machine; 6-32	7

Apply 110009 thermal heatsink compound to mating surfaces.

24G881 Motor Control for E-30 and EXP-2



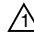
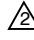
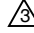
Ref.	Part	Description	Qty.
701	16F745	HEAT SINK	1
702	---	BOARD, motor control	1
703	---	SCREW, machine; 6-32 x 3/8 in. (10 mm)	6
704	117526	SPACER	3
705	117683	SCREW, 6-32 x 1-1/2 in. (38 mm)	2
707	15C007	INDUCTOR	1
709	15B408	CABLE, harness, motor	1

Apply 110009 thermal heatsink compound to mating surfaces.

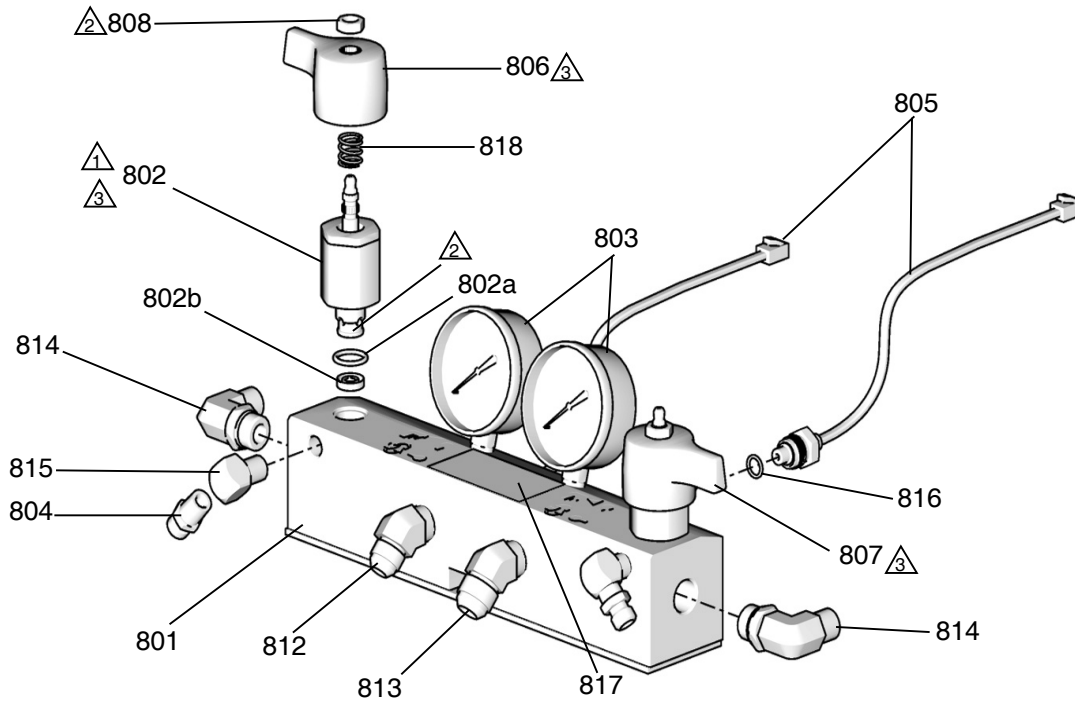
Motor harness (609) plugs in here.

---Not for sale.

Fluid Manifold

-  Torque to 355-395 in-lb (40.1-44.6 N•m).
-  Apply sealant (113500) to threads.
-  Valve must be closed with handle position as shown on drawing.

** Apply PTFE tape or thread sealant to tapered threads.



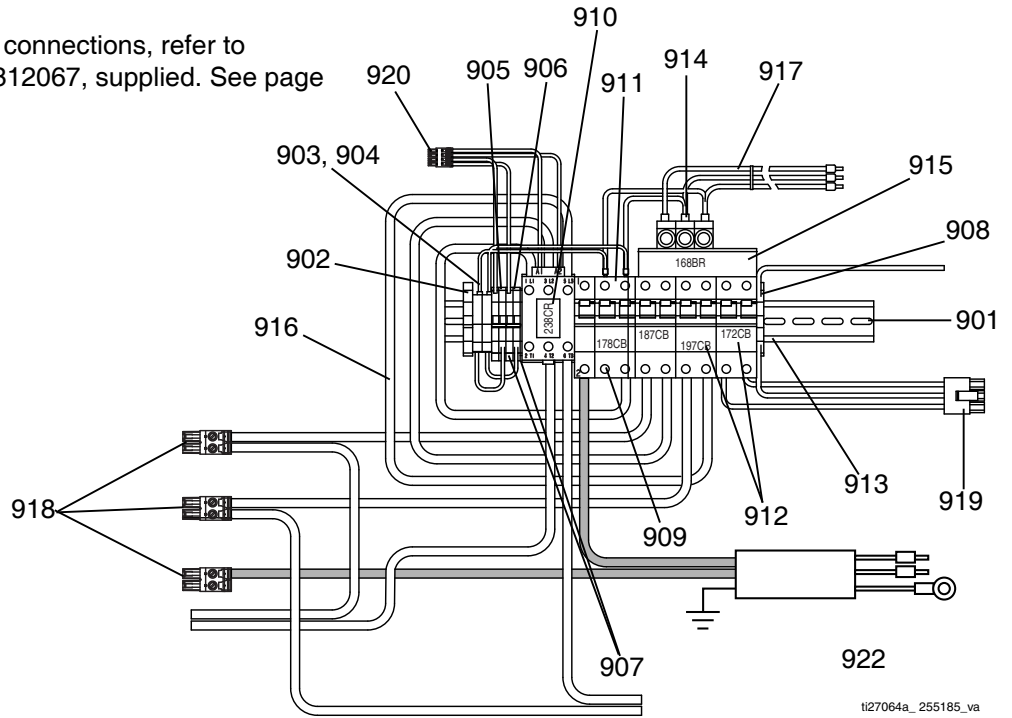
TI10959a

Ref.	Part	Description	Qty.	Ref.	Part	Description	Qty.
801◆	247837	MANIFOLD, fluid	1	816	111457	O-RING, PTFE	2
802†	247824	VALVE, drain cartridge	2	817▲	189285	LABEL, caution	1
802a†	158674	. O-RING	1	818†	150829	SPRING, compression	2
802b†	247779	. SEAL, seat, valve	1	▲ Replacement Warning labels, signs, tags, and cards are available at no cost.			
803	102814	GAUGE, pressure, fluid	2	† Included in the following complete valve kits*: ISO Valve Kit (left/red handle) 255149. Resin Valve Kit (right/blue handle) 255150. Valve Set Kit (both handles and grease gun) 255148.			
804	162453	FITTING, 1/4 npsm x 1/4 npt	2	* Complete valve kits also include thread sealant. (Purchase kits separately).			
805	24K999	TRANSDUCER, pressure, control	2	‡ To order a replacement part, verify the type of fitting used with your fluid manifold (1/2 NPT or 3/4 ORB fitting).			
806	247788	HANDLE, red	1	◆ Part includes replacement ORB fittings (part 812 and 813).			
807	247789	HANDLE, blue	1				
808†	112309	NUT, hex, jam	2				
812‡	17Y236	FITTING, 3/4 ORB x #8 JIC	1				
	117566	FITTING, #8 JIC x 1/2 npt	1				
813‡	17Y235	FITTING, 3/4 ORB x #10 JIC	1				
	117557	FITTING, #10 JIC x 1/2 npt	1				
814	121312	ELBOW, 90 degrees	2				
815	100840	ELBOW, street; 1/4 npsm x 1/4 npt	2				

Circuit Breaker Modules

A: 230V, 3 Phase Circuit Breaker Modules (E-20, EXP-1)

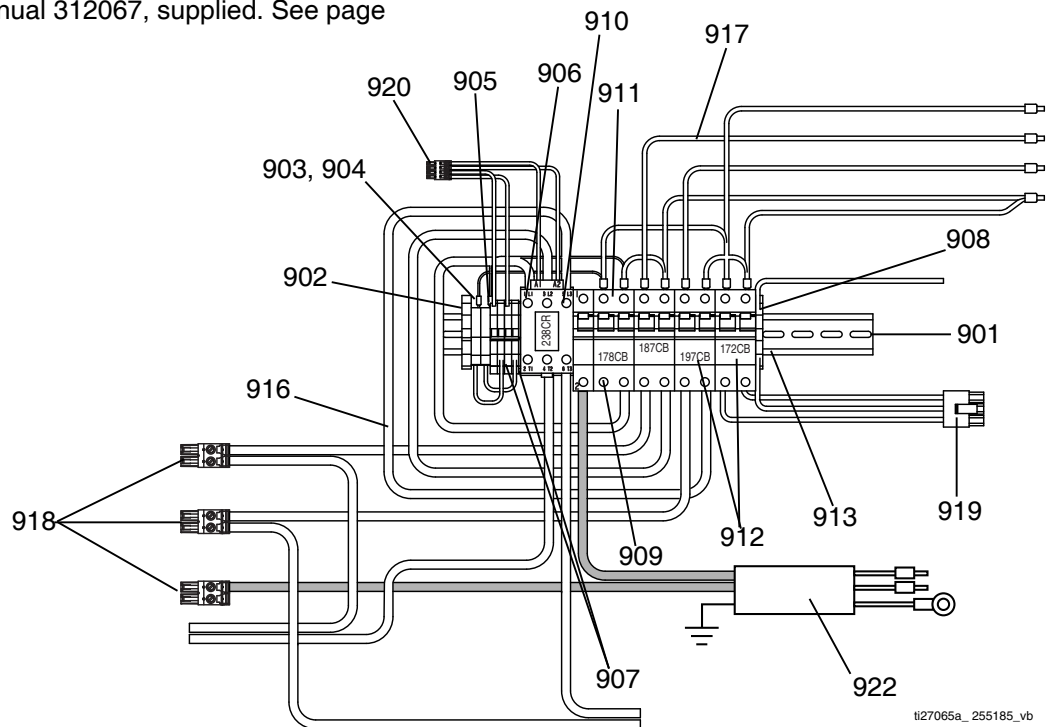
NOTE: For wiring and cable connections, refer to electrical diagrams manual 312067, supplied. See page 72 for parts.



t127064a_255185_va

B: 400V, 3 Phase Circuit Breaker Modules (E-20, E-XP1)

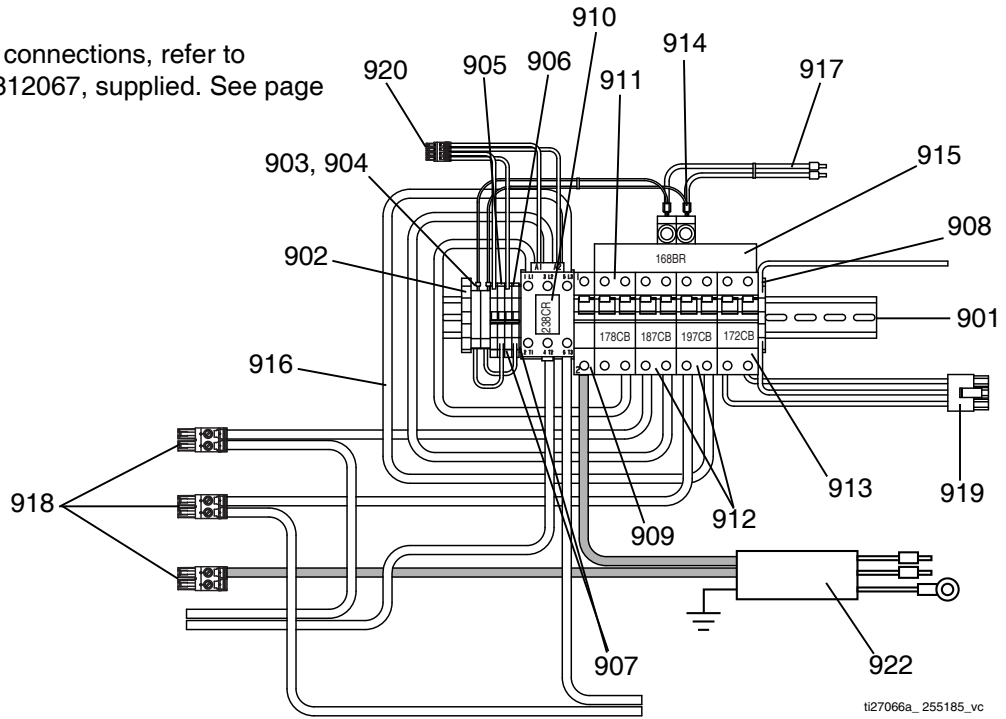
NOTE: For wiring and cable connections, refer to electrical diagrams manual 312067, supplied. See page 72 for parts.



t127065a_255185_vb

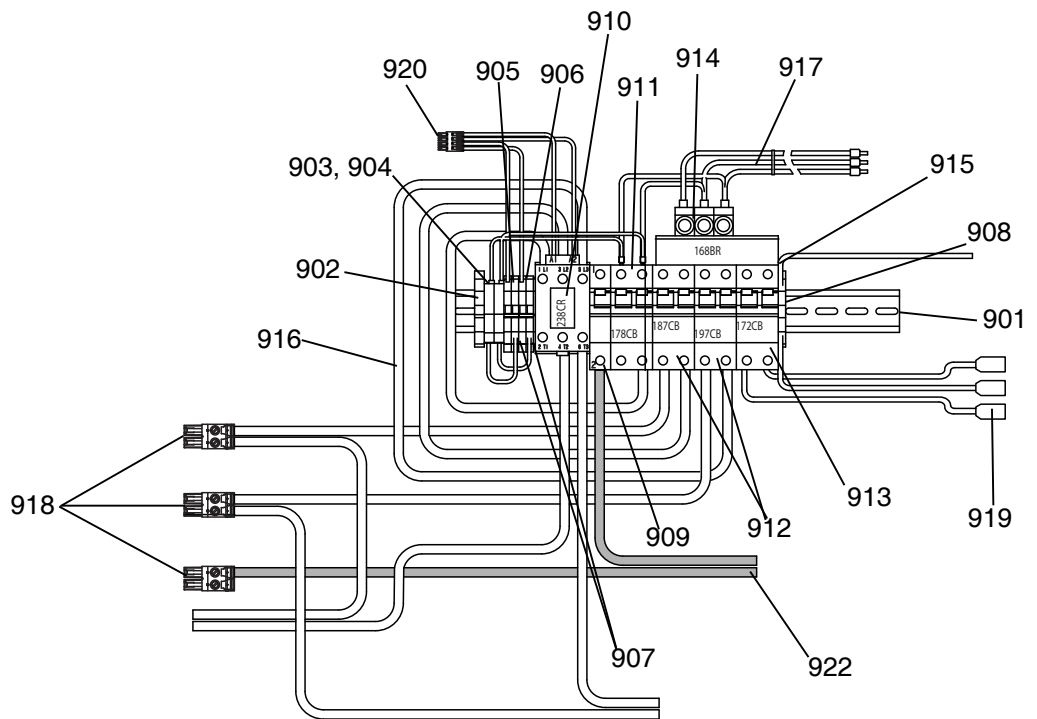
C: 230V, 1 Phase Circuit Breaker Modules (E-20, EXP-1)

NOTE: For wiring and cable connections, refer to electrical diagrams manual 312067, supplied. See page 72 for parts.



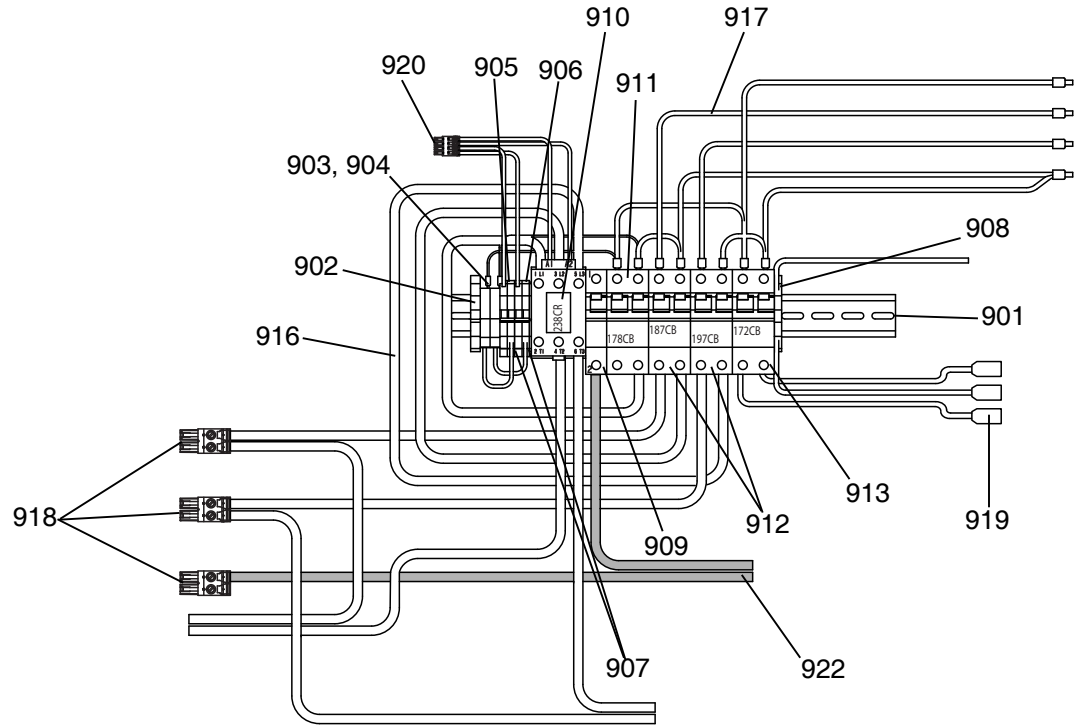
D: 230V, 3 Phase Circuit Breaker Modules (E-30, EXP-2)

NOTE: For wiring and cable connections, refer to electrical diagrams manual 312067, supplied. See page 72 for parts.



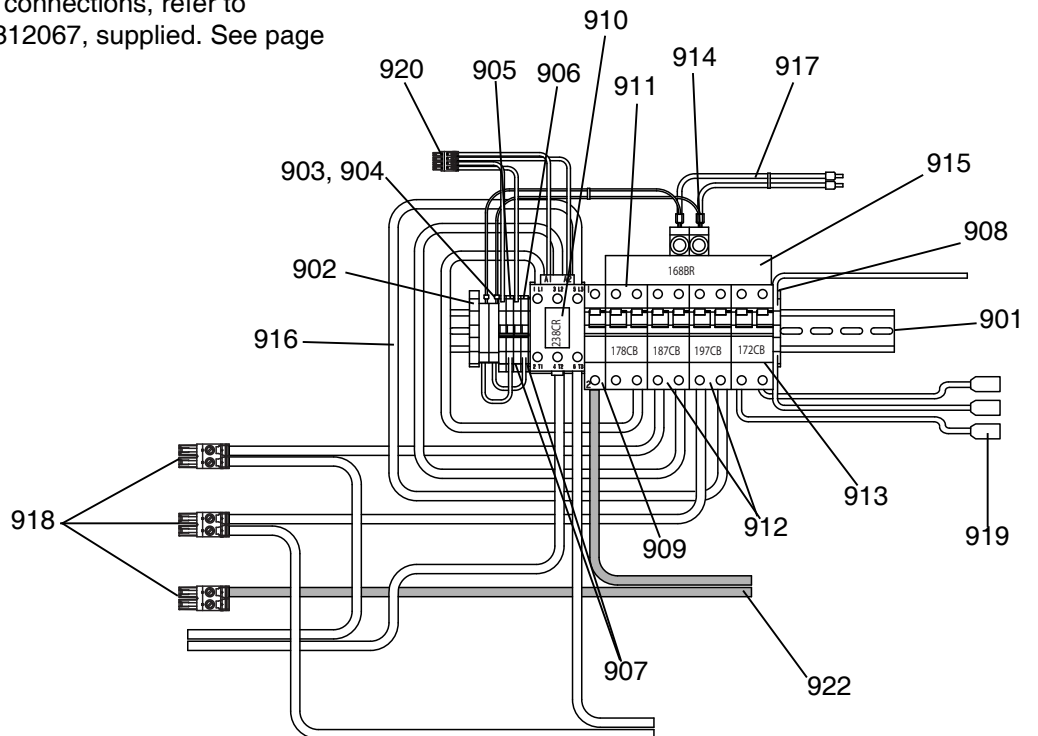
E: 400V, 3 Phase Circuit Breaker Modules (E-30, E-XP2)

NOTE: For wiring and cable connections, refer to electrical diagrams manual 312067, supplied. See page 72 for parts.



F: 230V, 1 Phase Circuit Breaker Modules (E-30, EXP-2)

NOTE: For wiring and cable connections, refer to electrical diagrams manual 312067, supplied. See page 72 for parts.



Circuit Breaker Modules Parts List

Ref.	Description	Breaker Modules						Qty.
		E-20 and EXP-1 Models			E-30 and EXP-2 Models			
		A 230V, 3 phase	B 400V, 3 phase	C 230V, 1 phase	D 230V, 3 phase	E 400V, 3 phase	F 230V, 1 phase	
901	RAIL, mounting	255028	255028	255028	255028	255028	255028	1
902	CLAMP, block, end	255045	255045	255045	255045	255045	255045	1
903	HOLDER, fuse terminal, block	255043	255043	255043	255043	255043	255043	2
904	FUSE	255023	255023	255023	255023	255023	255023	2
905	TERMINAL, block	255042	255042	255042	255042	255042	255042	4
906	TERMINAL, end cover	---	---	---	---	---	---	1
907	BRIDGE, plug in, jumper	255044	255044	255044	255044	255044	255044	2
908	BLOCK, terminal ground	255046	255046	255046	255046	255046	255046	1
909	BREAKER, 1 pole, 50A	255026	255026	255026	255026	255026	255026	1
910	CONTACTOR, relay, 65A	255022	255022	255022	255022	255022	255022	1
911	BREAKER, 2 phase, 40A	247768	247768	247768	247768	247768	247768	1
912	BREAKER, 2 phase, 25A	255050	255050	255050	255050	255050	255050	2
	BREAKER, 2 phase, 40A	247768	247768	247768	247768	247768	247768	2
913	BREAKER, 2 phase, 20A	255049	255049	255049	255049	255049	255049	1
914	CONNECTOR, power lug	117679			117679			3
	CONNECTOR, power lug			117679			117679	2
915	BAR, power buss, 3 phase	117805			117805			1
	BAR, power buss, 1 phase			117678			117678	1
916	CABLE, harness lower	247802	247802	247802	247802	247802	247802	1
917	CABLE, harness upper	247805	247806	247804	247805	247806	247804	1
918	CONNECTOR, 2 pin large	255027	255027	255027	255027	255027	255027	3
919	CONNECTOR, 3 pin	247522	247522	247522	247567	247567	247567	1
920	CONNECTOR, 4 pin	255031	255031	255031	255031	255031	255031	1
922	CABLE, harness	247791 † 17H075 ‡	247791 † 17H075 ‡	247791 † 17H075 ‡	247791	247791	247791	1

--- Not for sale.

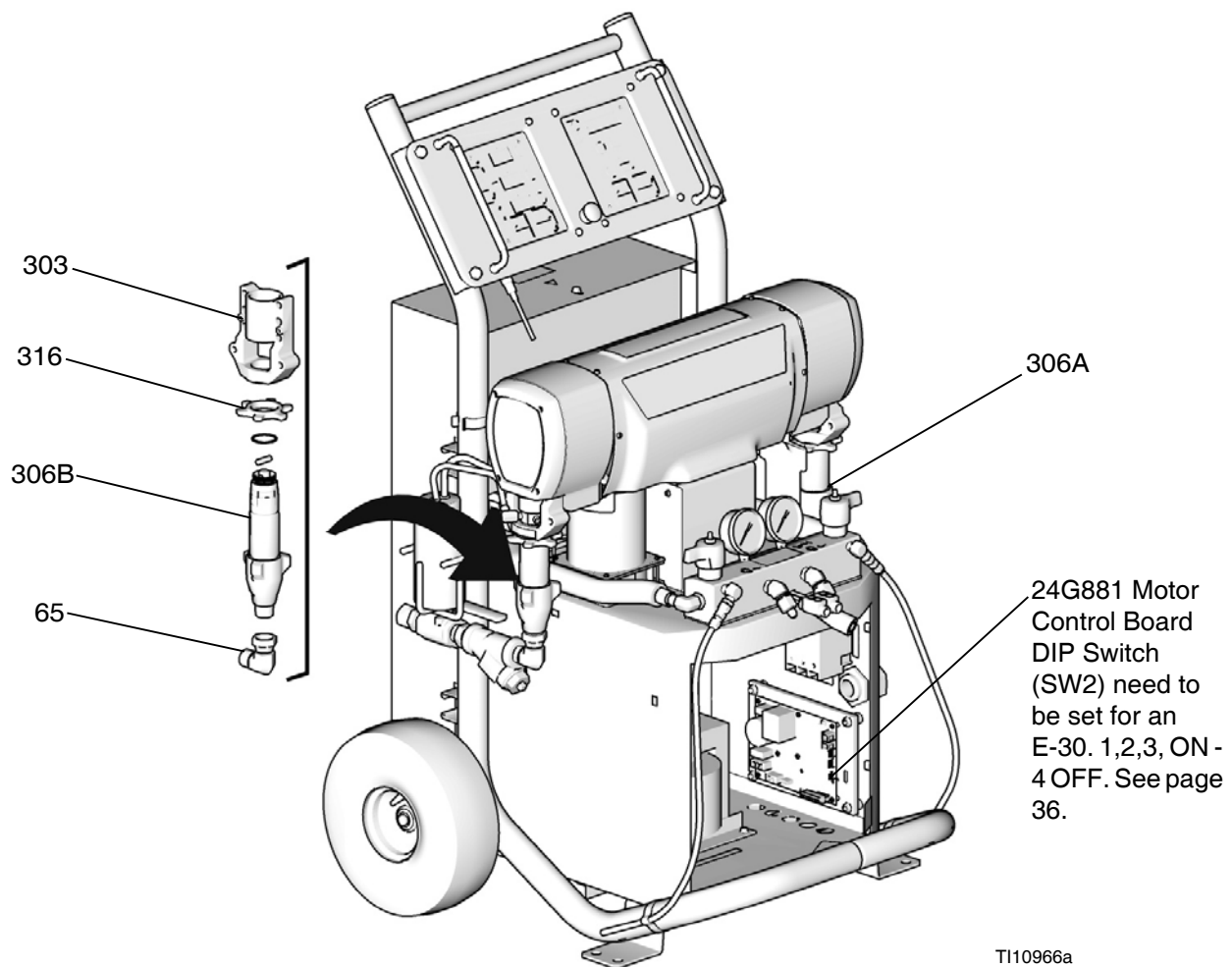
† For models series A - E.

‡ For models series F - G

248669 Conversion Kit

Convert and phase E-XP2 to and E-30 with 15.3 kW of heat by changing displacement pumps, bearings, and changing the Motor Control DIP settings to that of an E-30. For removal and installation of displacement pumps and bearings, see **Pump Removal** (page 26) and **Pump Installation** (page 28). For changing Motor Control DIP settings, see **Motor Control Board**, page 36.

Ref.	Part	Description	Qty.
65	118463	ELBOW, swivel; 3/4 npt(m) x 1 in. npt(f)	2
303	245927	HOUSING, bearing	2
306A	246832	PUMP, displacement, component A; see 309557	1
306B	245972	PUMP, displacement, component B; see 309577	1
316	193394	NUT, retaining	2



Dimensions

Dimension	in. (mm)
A	46.0 (1168)
B	31.0 (787)
C	33.0 (838)

