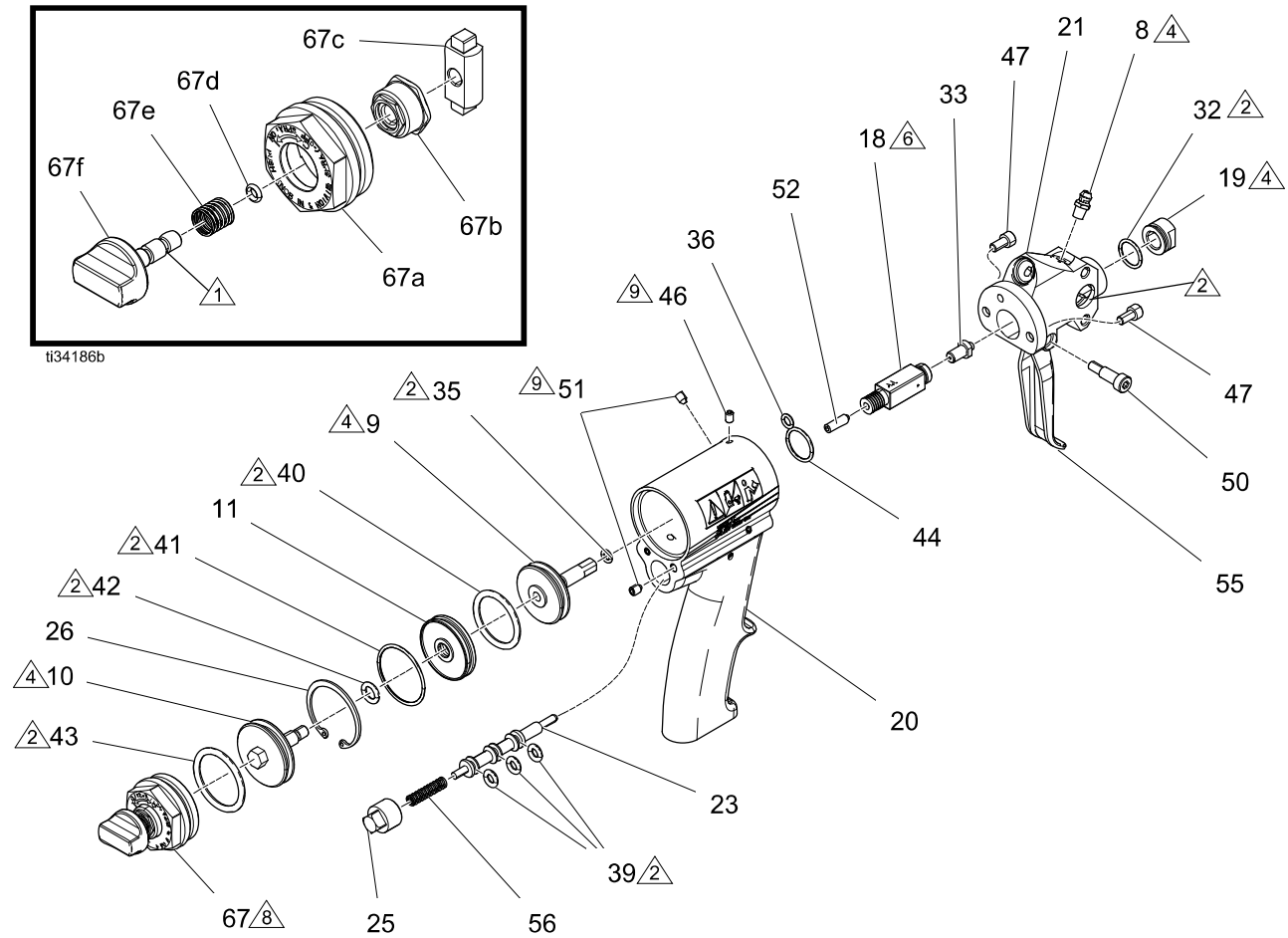


Parts



- △1 Apply thread sealant (Part 070678) and torque to 35–40 in-lb (4–4.5 N•m).
- △2 Apply lithium grease (Part 121944).
- △4 Torque to 50+/-10 in-lb.
- △6 Torque to 25+/-5 in-lb.
- △8 Apply blue sealant (Part 070678) to threads of piston safety lock (67). Adjust nut counter-clockwise until it bottoms out.
- △9 Apply LocQuic® Primer T on 46 and 51, then apply Loctite® 222 sealant.

Ref.	Part	Description	Qty.	Ref.	Part	Description	Qty.
8	100846	FITTING, zerk, st	1	42	GC2059	O-RING	1
9	GC1898	PISTON, air, 1-3/8	1	43	C20207	PACKING, o-ring	1
10	GC1899	PISTON, air, 1-1/2	1	44	GC2060	O-RING	1
11	GC1900	SPACER, cylinder	1	46❖‡	GC2081	SCREW, set	11
18	GC250A	MODULE, mix chamber, model GCP2RA	1	47	GC2187	SCREW, shdc,	2
	GC2500	MODULE, mix chamber, model GCP2R0	1	50	GC2237	SCREW, shoulder	1
	GC2501	MODULE, mix chamber, model GCP2R1	1	51‡	GC2241	SCREW, set	2
	GC2502	MODULE, mix chamber, model GCP2R2	1	52	GC2243	SCREW, set	1
	GC2503	MODULE, mix chamber, model GCP2R3	1	54❖	15B772	HOSE, air, 18 in.	1
	GC2504	MODULE, mix chamber, model GCP2R4	1	55	GC2340	TRIGGER, Probler 2	1
	GC2505	MODULE, mix chamber, model GCP2R5	1	56	GC2341	SPRING, compression	1
19	GC1914	TIP, front	1	67*	258761	PISTON SAFETY LOCK, assembly, P2	1
20	16A037	HANDLE, machined, P2 gun	1	67b†	---	NUT, adjustment, safety stop, P2	1
21	GC1916	HEAD, Probler 2	1	67c†	---	STOP, piston, P2	1
23	GC1918	PISTON, trigger	1	67d†	---	SPRING, compression	1
25	GC1920	PLUG, plug, trigger	1	67e†	---	O-RING	1
26	GC1921	RING, retaining, internal	1	67f	---	SHAFT, safety stop, P2	1
32	117517	O-RING	1	69❖	117792	GUN, grease, 3 oz	1
33	GC251A	INSERT, mix chamber, 0.036, model GCP2RA	1	70❖	117773	LUBRICANT, grease, food grade	1
	GC2510	INSERT, mix chamber, 0.051, model GCP2R0	1	71❖	118665	TUBE, grease, Fusion gun, 4 oz	1
	GC2511	INSERT, mix chamber, 0.059, model GCP2R1	1				
	GC2512	INSERT, mix chamber, 0.073, model GCP2R2	1				
	GC2513	INSERT, mix chamber, 0.088, model GCP2R3	1				
	GC2514	INSERT, mix chamber, 0.100, model GCP2R4	1				
	GC2515	INSERT, mix chamber, 0.125, model GCP2R5	1				
35	C20988	PACKING, o-ring	1				
36	GC2056	O-RING	1				
39	GC2058	O-RING	3				
40	108833	PACKING, o-ring	1				
41	107563	PACKING, o-ring	1				

❖ Not shown.

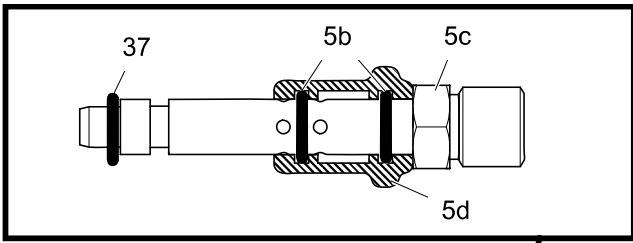
* Piston Safety Lock Replacement Kit (258761) available.

† Included in Piston Safety Lock Repair Kit (258762).

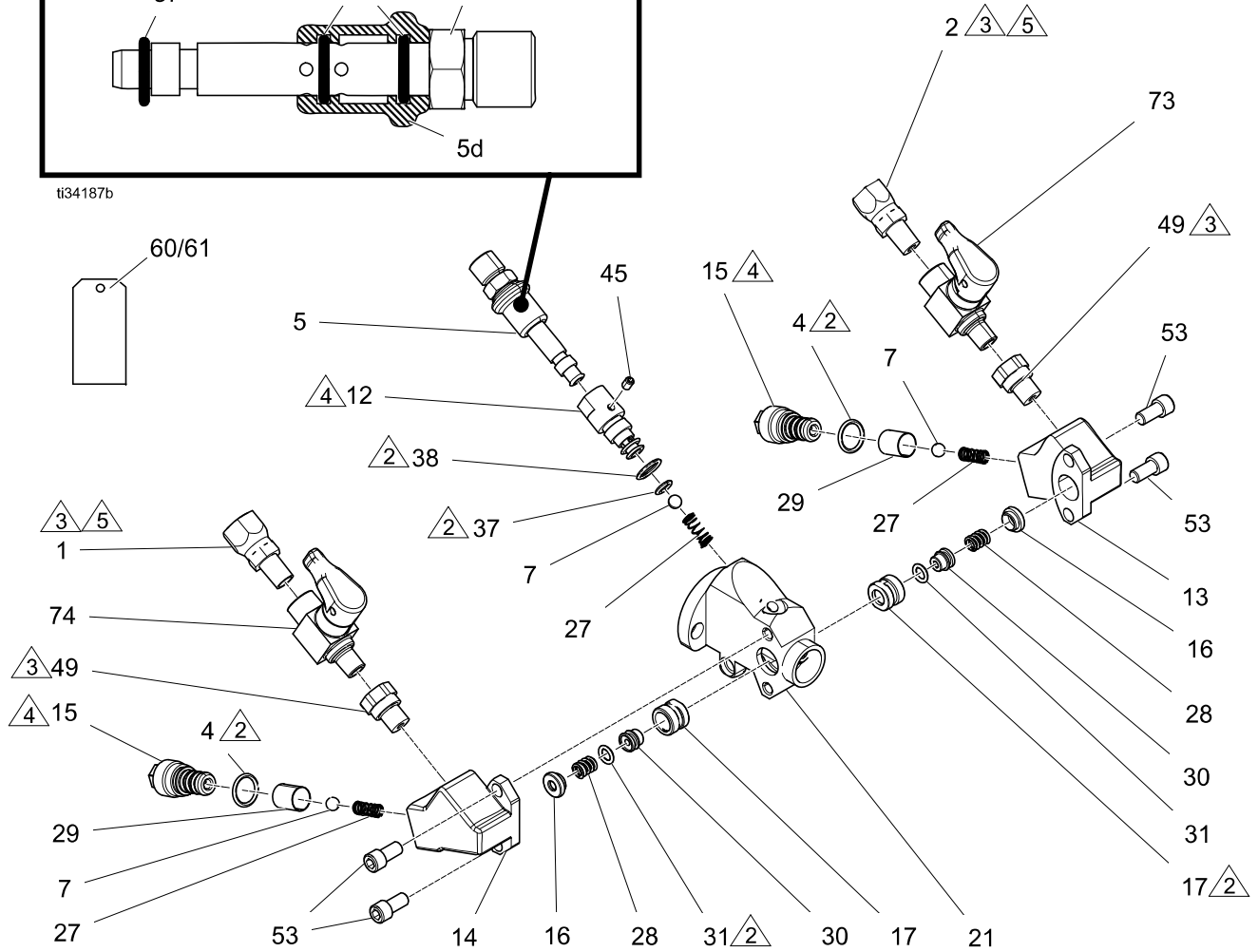
‡ Apply LocQuic® Primer T and Loctite® 222 sealant if set screws are removed for any reason.

--- Not for individual sale.

Parts



ti34187b



△2 Apply lithium grease (Part 121944).

△3 Apply anaerobic sealant (Part 070678).

△4 Torque to 50+/-10 in-lb.

△5 Torque to 150 in-lb. minimum.

△6 Torque to 25+/-5 in-lb.

Ref.	Part	Description	Qty.
1	117634	SWIVEL, union, #6 JIC	1
2	117635	SWIVEL, union, #5 JIC	1
4	248130	O-RING	2
5	GC0128	SWITCH, assembly, air	1
5b	106555	O-RING	2
5c	GC0126	TUBE, switch, air	1
5d	GC0127	SPOOL, switch, air	1
7	GC0259	BALL, 1/4 dia.	3
12	GC1901	INSERT, valve, air	1
13†	16N599	BLOCK, side, ISO, P2	1
14†	16N600	BLOCK, side, RES, P2	1
15†	16P010	FILTER, valve, check	2
16	GC1905	SEAL	2
17	GC1906	HOUSING, seal	2
21	GC1916	HEAD, Probler 2	1
27✕	GC1922	SPRING	3
28	GC1923	SPRING	2
29✧✕	GC1924	SCREEN, filter, 40 mesh	2
30	GC2498	SEAL, side, Probler 2	2
31	111450	PACKING, o-ring	2
37	110242	PACKING, o-ring	2
38	GC2057	O-RING	1
45	GC2079	SCREW, set	1
49	15U395	ADAPTER, male x female, 1/8 NPT	2
53	GC2248	SCREW, shdc	4
60▲	172479	TAG, warning	1
61▲	222385	LABEL, safety, warning, med. alert	1
73◆	256459	VALVE, ball, assembly, ISO	1
74◆	256460	VALVE, ball, assembly, RES	1

✕ Available in bulk kits. See **Kits**, page 31.

✧ 100 mesh filter bulk kit (GC2497) also available.

◆ Replacement handles kit (24W375) available.

† Replacement side block kit (24P619) available.

▲ Replacement safety labels, tags, and cards are available at no cost.

--- Not for individual sale.