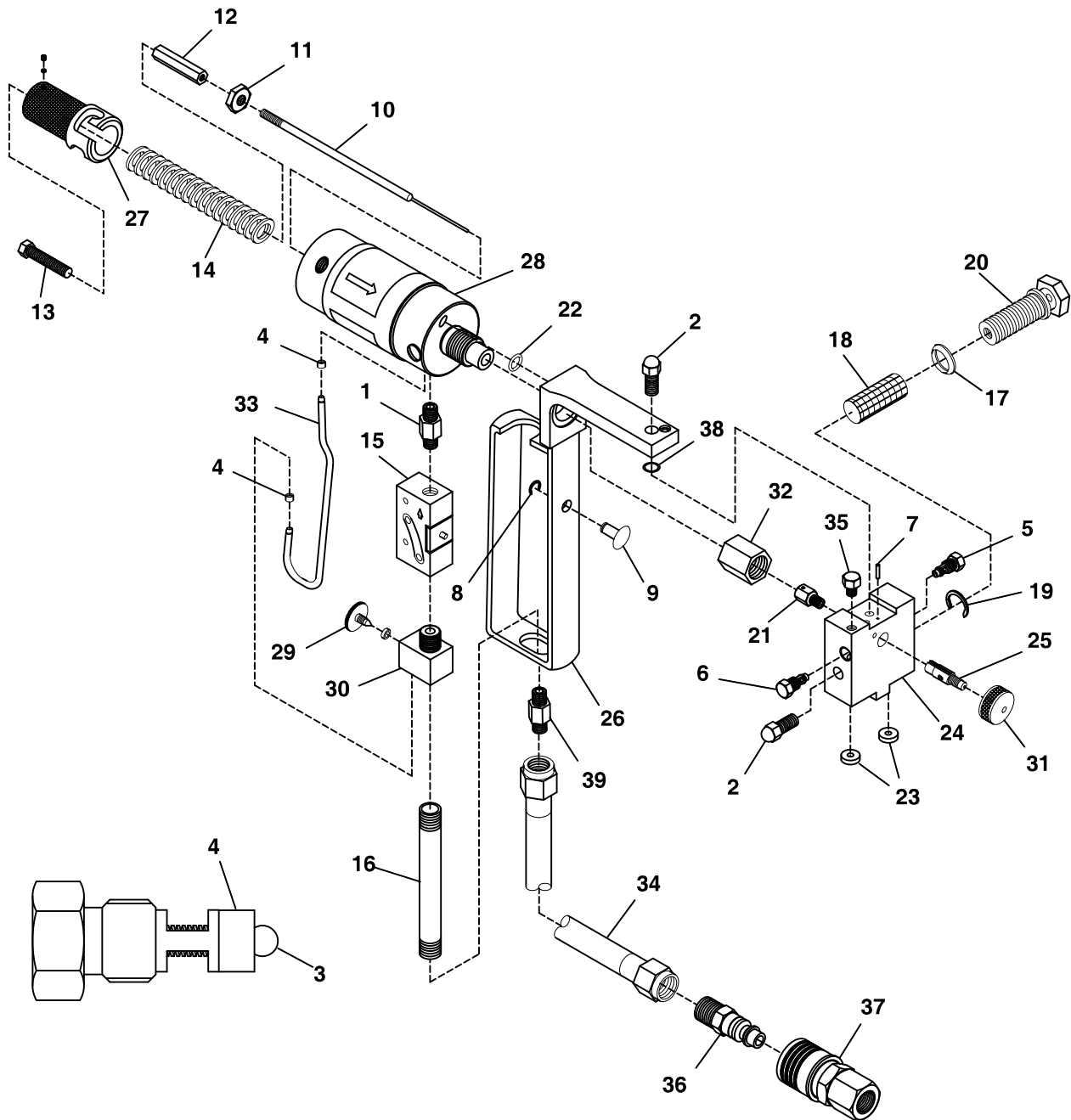


Parts

Model D Spray Gun Assembly



Model D Spray Gun Assembly

Ref. Part	Description	Qty.	Ref. Part	Description	Qty.
1	295591 Hex nipple, 1/8 in. MPT, steel	1	22	111450 O-ring	1
2	295185 Mounting screw, 1/2 in. LG	2	23	296625 Coupling block gasket (pack of 2)	
3	296090 Ball and spring assembly (pack of 10)		24	296121 D gun block, complete (includes G, AA, AP)	1
4	296091 Check valve sleeve (pack of 10)		25	----- Mixing chamber (includes Y) (see Table 1)	1
5	296614 Kit, A-check valve, includes C and D (pack of 10)		26	295590 Gun frame	1
6	296615 Kit, R- check valve, includes C and D (pack of 10)		27	296629 Spring retainer case (includes N)	1
7	295592 Roll pin, 1/16 x 5/16 in. SST	1	28	---- Air cylinder (see page 25)	1
8	---- Snap ring (see J)	1	29	296633 Needle valve and packing kit	1
9	296616 Trigger button; includes H	1	30	295182 Needle valve body	1
10 †	---- Valving rod (see Table 1)	1	31	---- Air cap (see Table 1)	1
11	---- Valving rod positioner (see M)	1	32	295183 Retainer nut/dust cover	1
12	296617 Valving rod stop bar; includes L	1	33	296126 Gun air tube, includes D	2
13	295171 Valving rod stop adjustment screw	1	34	15B772 Air hose	1
14	296618 Valving rod closure spring	1	35	295482 Closure screw	1
15*	---- Air valve	1	36	295596 Coupler plug	1
16	296620 Pipe nipple	1	37	295597 Coupler	1
17	296621 Screen screw seal (pack of 10)		38	103557 O-ring	1
18	296622 Screen-80 mesh (pack of 10)		39	100030 Fitting	1
	296623 Screen-80 mesh (pack of 50)				
19	295595 Snap ring	1			
20	296624 Kit, gun block screen screw (includes U, V, W)	1			
21	296611 Felt wiper assembly (includes retainer, wiper, washer) (pack of 5)				
	297139 Felt wiper (pack of 15) and retainer washers (pack of 3)				

* Purchase Air Valve Repair Kit 296125 (purchase separately). Includes Needle Valve Packing.

★ Not shown.

† Rods shipped with sharp edges.

Table 2: Model D Gun Assembly, Parts by Model Number

Model No.	Description	Valving Rod (K)	Mixing Chamber (AC)	Air Cap (AK)	Cleanout Spade★	Coupling Block (see page 26)	Tool Kit★
295530	D-55	296579	296597	296634	295934	295887	296636
295531	D-55-RECIRC	296579	296597	296634	295934	295884	296636
295532	D-62	296580	296598	296634	295935	295887	296636
295533	D-70	296581	296599	296635	295935	295887	296636

Table 3: Model D Gun Assembly, Parts by Mixing Chamber Size

Mixing Chamber Size					
Reference Size	46	55	62	70	78
K (valving rod)	296578	296579	296580	296581	296582
AC (chamber)	296594 (N-800) 296595 (N-810) 296584 (L-800) 296590 (L-800-LM) 296585 (L-810) 296591 (L-810-LM)	296597 (N) 296586 (L) 296592 (L-LM)	296598 (N) 296587 (L)	296599 (N) 296588 (L)	296600 (N) 297592 (L)
AK (air cap)	296838	296634	296634	296635	296635
Cleanout spade	297007 (pack of 2)	295934 (pack of 2)	295935 (pack of 2)	295935 (pack of 2)	295935 (pack of 2)

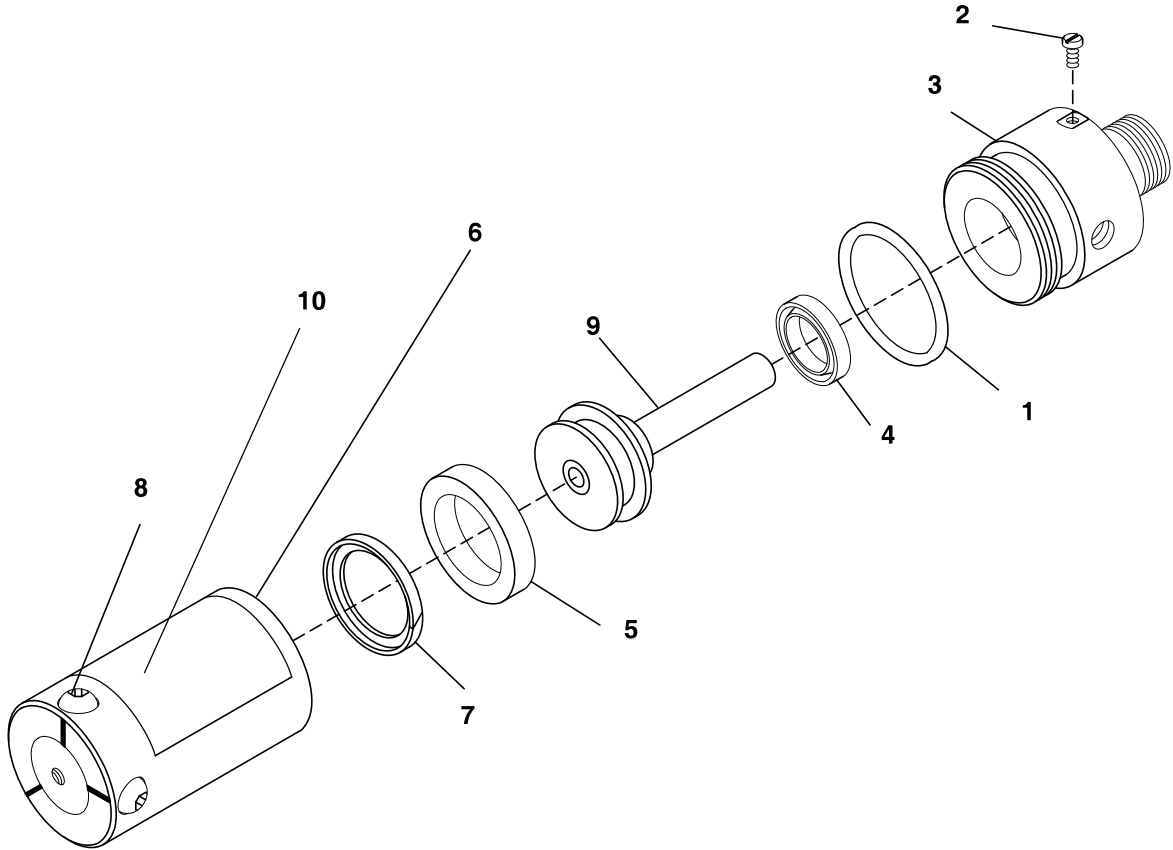
Standard Mixing Chambers

Six standard mixing chambers are available. The following table provides a general description about use and operational performance of each chamber. Actual pattern sizes and outputs achieved may vary depending on material viscosity, hose length, condition of equipment, environment, working pressure, and additional factors.

46 Size 296594 (N-800) 296584 (L-800) 296590 (L-800-LM)	Designed for operation in confined areas and for spraying 3/8 to 1/2-in. (.7 to 1.3 cm) thicknesses. Gun may be held within 4 in. (10.2 cm) of target without blowing away freshly applied foam. Pattern diameter is approximately 4 in., with gun 4-in. (10.2-cm) distance from target. Output is approximately 2 to 3-1/4 pounds/min. (.9 to 1.5 kg/min.).
46 Size 296595 (N-810) 296585 (L-810) 296591 (L-810-LM)	For the same uses as above. These chambers have an increased output of approximately 3 to 4-1/2 pounds/min. (1.4 to 2.0 kg/min.).
55 Size 296597 (N) 296586 (L) 296592 (L-LM)	Designed for stud areas of trucks and small- to medium-sized wall applications. Pattern diameter is about 8 in. (20.3 cm), with gun 18 to 20 in. (45.7 to 50.8 cm) from target. Output is approximately 6 to 8 pounds/min. (2.7 to 3.6 kg/min.).
62 Size 296598 (N) 296587 (L)	For very large area applications. Pattern diameter is about 9 in. (22.9 cm) with gun 18 to 20 in. (45.7 to 50.8 cm) from target. Output range is about 7 to 10 pounds/min. (3.2 to 4.5 kg/min.).
70 Size 296599 (N) 296588 (L)	For very large area applications. Pattern diameter is about 10 in. (25.4 cm) with gun 18 to 20 in. (45.7 to 50.8 cm) from target. Output range is about 9 to 12 pounds/min. (4.1 to 5.4 kg/min.).
78 Size 296600 (N) 297592 (L)	For very large area applications. Pattern diameter is about 14 in. (35.6 cm) with gun 24 in. (60.9 cm) from target. Output range is about 13-1/2 to 16-1/2 pounds/min. (6.1 to 7.5 kg/min.).

Air Cylinder Assembly

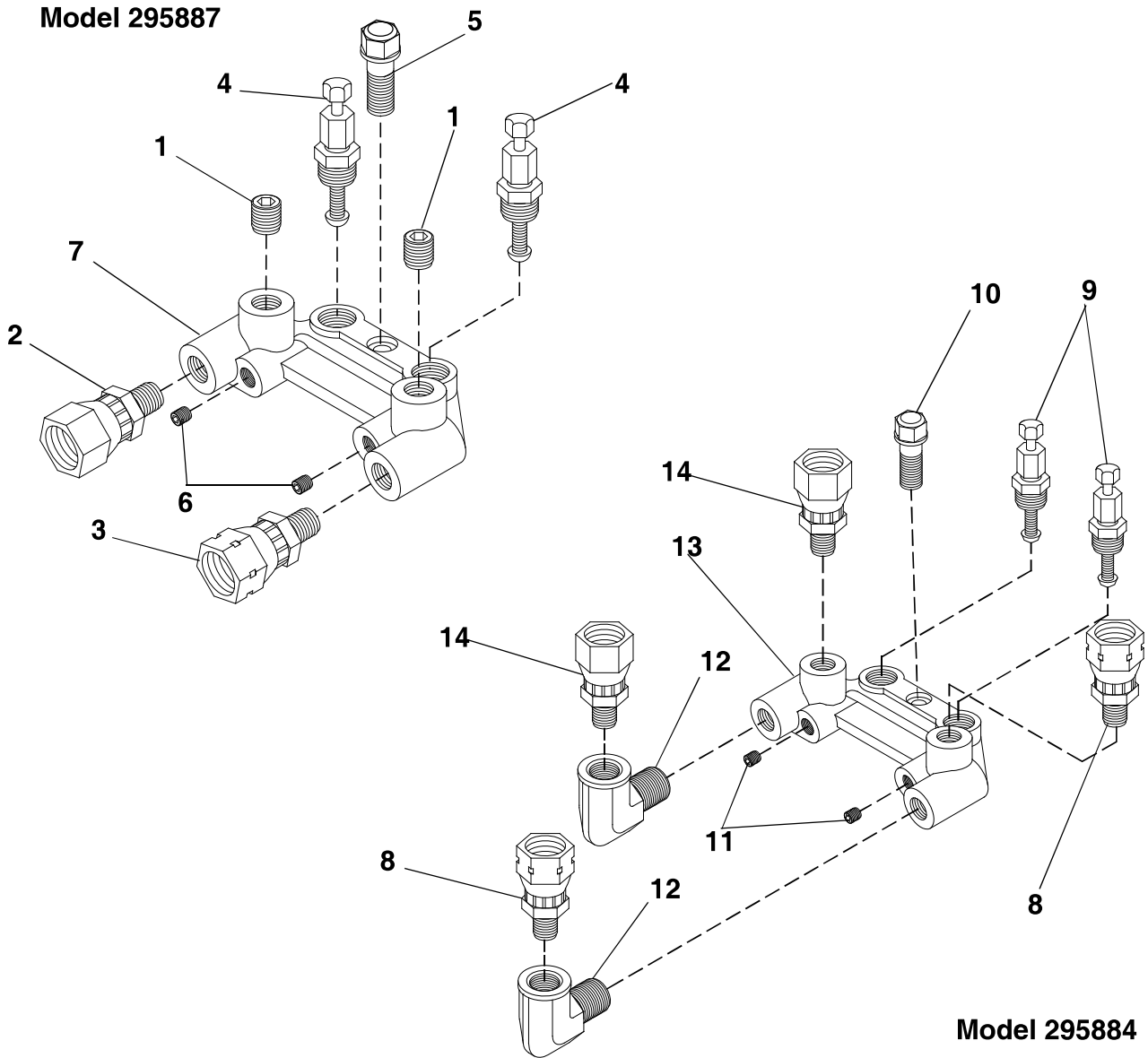
Part Number 296632



Ref.	Part	Description	Qty.
1*	107083	O-ring, fluoroelastomer	1
B2	295494	Pan head machine screw, 8-32 x 3/16 in.	1
3	295177	Front head blank	1
4*	296627	U-cup (pack of 5)	
5*	296628	U-cup (pack of 5)	
6	295178	Cylinder	1
7*	296631	Wear ring	1
8	295179	Buttonhead cap screw	3
9	295484	Piston assembly	1
10▲	295492	Label, warning	1

* Parts included in Air Cylinder Seal Kit 296725 (purchase separately)
 ▲ Replacement Danger and Warning labels, tags, and cards are available at no cost.

Coupling Block Assembly



Model 295887 (Standard)

Ref.	Part	Description	Qty.
1	295662	Flush seal pipe plug, 1/8 in.	2
2	295888	R-swivel fitting	1
3	295889	A-swivel fitting	1
4	296626	Manual valve assembly (pack of 2)	-
5	295619	Mounting screw, 15/16 in.	1
6	295693	Flush seal pipe plug, 1/36 in.	2
7	295886	Coupling block	1

Model 295884 (Recirc)

Ref.	Part	Description	Qty.
8	295889	A-swivel fitting	2
9	296626	Manual valve assembly (pack of 2)	-
10	295619	Mounting screw	1
11	295693	Pipe plug	2
12	112307	Street elbow	2
13	295886	Coupling block	1
14	295888	R-swivel fitting	2